

MICHIGAN  
DEPARTMENT OF CONSERVATION  
FORESTRY DIVISION

# LAND CORNER RECORD

T. 47-48 N.R. 34 W

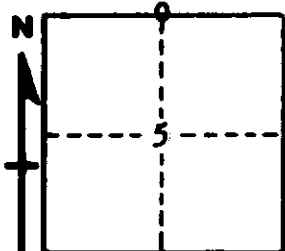
Benzie COUNTY

DESCRIPTION OF CORNER 1/4 Corner for Secs. 5, T47N R34W and 32, T48N R34W

CORNER MONUMENT 1" Iron Pipe with 4" Aluminum Cap

DATE MONUMENT PLACED AND WITNESSED 7/28/65 with Forester Stevens

WITNESSES TO CORNER..... 8" W. Birch (1/4S N BT), N 79° W, 12 Lrs.



7" W. Pine (1/4S NBT), S 22° E, 33 1/2 Lrs.

AND

CIRCLE CORNER REGISTERED

DESCRIPTION IN DETAIL AS TO HOW CORNER WAS LOCATED AND IDENTIFIED OR RESTORED.

This Corner was replaced from W. Pine Stump, (W. Pine 34", N 25° E, 15 Lrs. )  
rotted badly seems to check with Swamp edges to East and West.

SURVEYOR'S SEAL

SIGNED Frank J. Bray DATE 2/10/1966  
REGISTERED LAND SURVEYOR