

MICHIGAN  
DEPARTMENT OF CONSERVATION  
FORESTRY DIVISION

LAND CORNER RECORD

T. 47-48 N.R. 24 W

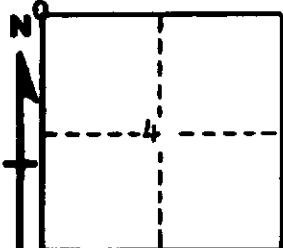
Baraga COUNTY

DESCRIPTION OF CORNER Section Corner for Secs. 4, 5, T47N R34W and 32, 33, T48N R34W

CORNER MONUMENT 1" Iron Pipe with 4" Aluminum Cap

DATE MONUMENT PLACED AND WITNESSED 7/28/65 with Forester Stevens

WITNESSES TO CORNER..... 18" W. Pine (S32 N BT), N 74° W, 26 1/2 Dcs.



7" E. Spruce (S4 NBT), S 70° E, 29 Dcs.

AND

CIRCLE CORNER REGISTERED

DESCRIPTION IN DETAIL AS TO HOW CORNER WAS LOCATED AND IDENTIFIED OR RESTORED.

This Corner was placed on Line and Midway between 1/4 Corner to East and to West. No Original evidence. N-S Blazed Line in near vicinity.

SURVEYOR'S SEAL

SIGNED Frank J. Bray DATE 2/10/1966  
REGISTERED LAND SURVEYOR