

*Forestry Div. - Lansing*

MICHIGAN  
DEPARTMENT OF CONSERVATION  
FORESTRY DIVISION

# LAND CORNER RECORD

T. 46-47 N.R. 33-34W

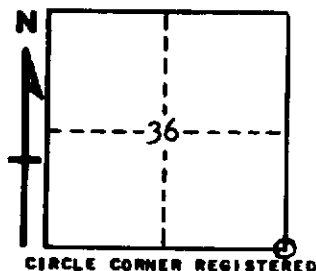
Baraga COUNTY

DESCRIPTION OF CORNER Sec. Cor. 1, 6, 31, & 36 (also twp. cor.)

CORNER MONUMENT 1" I.D. x 36" iron pipe with 4" aluminum cap

DATE MONUMENT PLACED AND WITNESSED August 28, 1968

WITNESSES TO CORNER..... Balsam Fir 7 S3W 18 lks. "S1 NBT"



AND

**DESCRIPTION IN DETAIL AS TO HOW CORNER WAS LOCATED AND IDENTIFIED OR RESTORED.**

Monument placed at site of the following assorted monuments found about the corner:

- (1) 1" I.D. x 36" iron pipe with 2" brass cap, set by Northern Paper Mills.
- (2) 3/4" I.D. x 3-1/2" plain iron pipe, set by unknown persons.
- (3) A squared cedar post set by Land Economic Survey in 1930's.
- (4) Four other miscellaneous old posts or pickets lying on ground, set by unknown surveyors.

These monuments were set from an original W. Pine 20 S45E 43 links BT stump, still there as of this date, with part of lower blaze and notch visible on the badly deteriorated stump. Also found a detached slab from stump with overgrowth scars and M. P. M. location poster on it. N. P. M. had re-witnessed corner as follows:

Balsam Fir 12 N52W 11 1/2 lks. "T47N, R34W, S36, NBT"  
Balsam Fir 12 N66E 42 1/2 lks. "T47N, R33W, S31, NBT"

Both NBT's still living and in good condition.

Names of persons present when monument was placed: A. O. Enger, J. E. Hulkonen, and W. A. Dellies.

SURVEYOR'S SEAL

SIGNED

*Arthur O. Enger*  
REGISTERED LAND SURVEYOR

DATE

10/29/68