

MICHIGAN
DEPARTMENT OF CONSERVATION
FORESTRY DIVISION

LAND CORNER RECORD

T. 47 N N.R. 34W

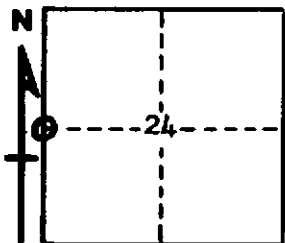
Baraga COUNTY

DESCRIPTION OF CORNER 1/4 cor. bet. Sec. 23 & 24

CORNER MONUMENT 1" I. D. x 36" iron pipe with 4" aluminum cap

DATE MONUMENT PLACED AND WITNESSED September 3, 1968

WITNESSES TO CORNER..... Sugar Maple 6 S43W 25 lks. "1/4 S NBT"



Sugar Maple 7 N22W 32 lks. "1/4 S NBT"

AND

CIRCLE CORNER REGISTERED

DESCRIPTION IN DETAIL AS TO HOW CORNER WAS LOCATED AND IDENTIFIED OR RESTORED.

The above described monument replaces a 3/4" I. D. x 5' iron water pipe at this corner, which had been set from an original BT, Y. Birch 14 N66E 30, now a 25 ft. high dead stub with both faces and some scribe marks still visible. Person who placed the pipe is unknown, but the pipe had been re-witnessed on June 29, 1951 by D. DeLaMater, R. L. S., Michigan Conservation Department, with the following witnesses:

W. Birch 8 N2E (now N5W) 50 lks. "NBT"
Soft Maple 14 S16W (now S13W) 39 lks. (now 40 lks.) "NBT"
Soft Maple 8 S88E 42 lks.

Names of persons present on this date when new monument was placed:
A. O. Enger, K. L. Sackett, J. E. Hulkonen, and W. A. Dellies.

SURVEYOR'S SEAL

SIGNED Arthur O. Enger DATE 10/29/68
REGISTERED LAND SURVEYOR