

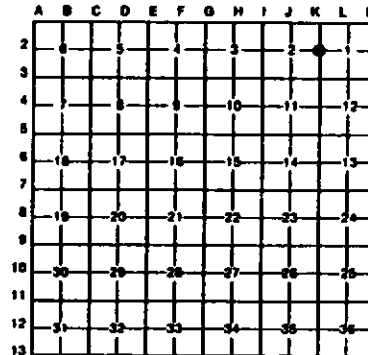
LAND CORNER RECORDATION CERTIFICATE
Filing Requirement of Act 74, Mich. P.A. 1970

For corners in
Barage

County	Located In:	Corner Code #
1. Public Land Survey	T 47N R 34W	N3
	T 47N R 34W	N1
	T 47N R 34W	K2
2. Property Controlling in Section	S T R	
	S T R	
3. Miscellaneous Property in Sec.	S T R	
	S T R	

Register of Deeds Stamp & File Number

4. Lot No. _____ Recorded Plat _____
5. Private Claims _____



K2 March 23, 1994
N1 March 30, 1994
N3 July 12, 1994

I, Stephan J. Szyszkoski, in a field survey on N3 July 12, 1994, 19____ do hereby certify that under requirements of P.A. 74, Michigan P.A. of 1970, the corner points mentioned in lines 1 and 2 above were in conformance with regulations and rules therefore as required in the current manual of survey instructions of the United States Department of the Interior, Bureau of Land Management or by a decree of a Court of Law and/or that the corner points mentioned in lines 3, 4 and 5 above were in conformance with the rules of the Michigan Board of Land Surveyors or by a Decree of a Court of Law, established, re-established, monumented, re-monumented, recovered, found as expressed below:

NOTE: Not more than 4 corners, all in the same town and range, may be recorded on this certificate.

A. Description of original monument and accessories and/or subsequent restoration:

- (N3) Corner common to Sections 1-12 T47N-R34W and 6-7 T47N-R33W. Corner recorded by Dean C. DeLaHater in 1954 as monumented from original BTs with a 1" pipe with 4" cap and the following NBTs; 10" Hemlock N65E 29 links, 10" Y. Birch S14W 42 links. Found no subsequent record.
- (N1) Corner common to T47-48N Ranges 33-34W. Corner previously monumented and recorded by Billy D. Buckler, RLS in 1959. Buckler restored the corner from the remains of original BT and placed a 1" pipe with 4" brass cap at the corner, and marked the following NBT: 10" Cedar (dead) S57W 33 links.
- (K2) Quarter corner common to Sections 1-2. Corner reestablished and recorded in 1975 by A.D. Enger, RLS. Corner was restored at proportionate position and monumented with a 1" ID iron pipe with 3 1/2" aluminum MDNR cap and the following NBTs: 16" twin Y. Birch N43W 12.5", 13" Y. Birch S00W 3.7". Found no subsequent record.

B. Description of corner evidence found and/or method applied in restoring or reestablishing corner:

- (N3) Found and accepted a 1" I.D. iron pipe with 4" brass Michigan Dept. of Conservation cap at record bearing and distance from the 2 1954 NBTs, both alive and in good condition. Blazes are overgrown but I chopped to expose the measuring notch in the Hemlock (meas. 19.4' to monument). Marked two new bearing trees as noted below. The corner is in a mound of rock, projecting about 3 ft. and not very firmly set.
- (N1) Found and accepted a 1" ID iron pipe with 4" brass Michigan Dept. of Conservation cap at record bearing and distance from the 1959 NBT. Also found the remains of the original W.Pine BT S57E 42 links - now an overturned stump in poor condition with no markings visible. Marked 4 new bearing trees as described below.
- (K2) Found and accepted Enger's monument as described, in good condition, at record bearing and distance from the 1975 NBTs, both in good condition. The corner falls at the south edge of an open marsh. Marked two new bearing trees as described below.

C. Description of monument for corner and accessories established to perpetuate locating the position of the corner:

- | | | |
|---|---|---|
| (N3) Found 1" pipe with 4" brass cap. Blazed and scribed the following new bearing trees:
5" Sugar S35E 23.3' "97 NBT"
12" Y. Birch N12W 11.7' "51 NBT"
Bearings are magnetic, distances horizontal. Decl. 2.5 deg. W. | (N1) Found 1" pipe with 4" brass cap. Blazed and scribed the following new bearing trees:
3" Cedar S11E 43.5' "56 NBT"
3" double Cedar N30E 30.4' "531 NBT"
3" B. Spruce S29W 57.9' "X"
2" Cedar N11E 47.0' "X"
Bearings are magnetic. Decl. 2.5 deg. W. | (K2) Found 1" pipe with 3 1/2" MDNR cap. Blazed and scribed the following new bearing trees:
16" Hemlock S52W 24.9' "1/45 NBT"
10" Spruce S40E 12.1' "1/45 NBT"
Bearings are magnetic. Decl. 2.5 deg. W. |
|---|---|---|

Signed by Stephan J. Szyszkoski Date 8-16-94
Surveyor's Michigan License No. 33986

