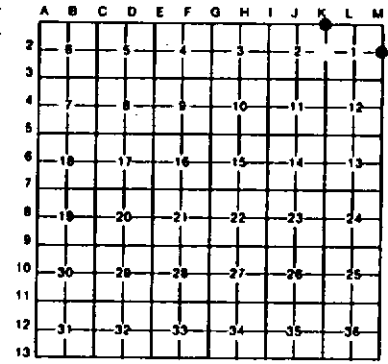


**LAND CORNER RECORDATION CERTIFICATE**  
**Filing Requirement of Act 74, Mich. P.A. 1970**

For corners in Baraga <small>(County)</small>	Located In:	Corner Code #
1. Public Land Survey	T 47N R 34W	K1
	T 47N R 34W	M2
	T R	
	T R	
2. Property Controlling in Section	S T R	
	S T R	
3. Miscellaneous Property in Sec.	S T R	
	S T R	

Register of Deeds Stamp & File Number

4. Lot No. \_\_\_\_\_, Recorded Plat \_\_\_\_\_  
 5. Private Claims \_\_\_\_\_



I, Stephan J. Szyszkoski, M2 July 26, 1994  
 in a field survey on K1 July 06, 1994, 19\_\_\_\_\_  
 do hereby certify that under requirements of P.A. 74, Michigan P.A. of 1970, the corner points mentioned  
 in lines 1 and 2 above were in conformance with regulations and rules therefore as required in the  
 current manual of survey instructions of the United States Department of the Interior, Bureau of Land  
 Management or by a decree of a Court of Law and/or that the corner points mentioned in lines 3, 4 and 5  
 above were in conformance with the rules of the Michigan Board of Land Surveyors or by a Decree of a  
 Court of Law, established, re-established, monumented, re-monumented, recovered, found as  
 expressed below:

**NOTE: Not more than 4 corners, all in the same town and range, may be recorded  
 on this certificate.**

**A. Description of original monument and accessories and/or subsequent restoration:**

(K1) Corner common to Sections 1-2 T47N-R34W and Sections 35-36 T48N-R34W. Corner re-monumented at record bearing and distance from original Y. Birch BT in 1959 by Billy D. Buckler, RLS. Corner monumented by a 1" pipe with 4" brass cap and new bearing trees: 9" Hard Maple S56E 95 links, 9" Hard Maple N24W 92.5 links. Found no subsequent record.  
 (M2) Quarter corner common to Section 1 T47N-R34W and Section 6 T47N-R33W. Corner established in 1846 by Austin Burt: Set cedar post, Cedar 14 S50W 14, Fir 7 N48E 18. Found no subsequent record.

**B. Description of corner evidence found and/or method applied in restoring or reestablishing corner:**

(K1) Found and accepted the 1959 monument as described, in good condition, and at record bearing and distance from the 1959 MBTs, both in good condition with blazes overgrown. Also recovered the stump remains of the Y. Birch BT N31W 21 links - no markings visible. Original BT Y. Birch 8 S50W 30 found as a windthrow mound at record bearing and distance. Found no subsequent record.  
 (M2) Original post and accessories not recovered. Found no evidence of a subsequent monument but noted a rotted BH blaze on an old Y. Birch faces the corner. Reestablished the corner proportionate to the original record on a straight line between monumented corners 2624.31' south and 2614.46' north. At the position for the corner I placed a 1"IDx32" iron pipe capped with a 4" dia. cast aluminum MDNR tablet appropriately stamped. A low ridge of rock, mentioned in the original notes, is 1.0 ch. south of the corner monumented. Marked 4 new bearing trees as described below. Corner falls in a wet area and monument projects about 2".

**C. Description of monument for corner and accessories established to perpetuate locating the position of the corner:**

(K1) Found 1" pipe with 4" Brass cap. Blazed and scribed the following new bearing trees: 9" Sugar S13W 35.0' "S2 NBT" 7" Sugar N68E 31.8' "S36 NBT" 14" Sugar N48E 3.5' to center. Squared and scribed. Bearings are magnetic. Decl 2.5 deg. W.	(M2) Set a 1" iron pipe with 4" MDNR cap. Blazed and scribed the following new bearing trees: 15" Cedar N44W 25.5' "1/4S NBT" 11" Cedar N06E 10.5' "1/4S NBT" 11" Cedar S82E 33.5' "1/4S NBT" 10" Cedar S20E 19.4' "1/4S NBT" Set a 4" squared cedar post 1' north. Bearings are magnetic. Decl 2.5 deg W.
---	---



Signed by Stephan J. Szyszkoski Date 8-16-94  
 Surveyor's Michigan License No. 33986