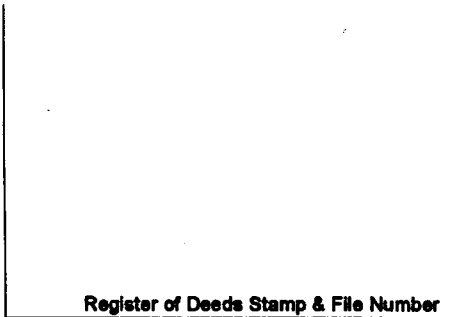


LAND CORNER RECORDATION CERTIFICATE
Filing Requirement of Act 74, Mich. P.A. 1970

For corners in

Baraga	Located In:	Corner Code #
(County)		
1. Public Land Survey	T <u>47</u> N R <u>34</u> W	<u>111</u>
	T <u> </u> R <u> </u>	<u> </u>
	T <u> </u> R <u> </u>	<u> </u>
	T <u> </u> R <u> </u>	<u> </u>
2. Property Controlling in Section	S <u>26</u> T <u>47</u> N R <u>34</u> W	<u>8</u>
	S <u> </u> T <u> </u> R <u> </u>	<u> </u>
3. Miscellaneous Property in Sec.	S <u> </u> T <u> </u> R <u> </u>	<u> </u>
	S <u> </u> T <u> </u> R <u> </u>	<u> </u>

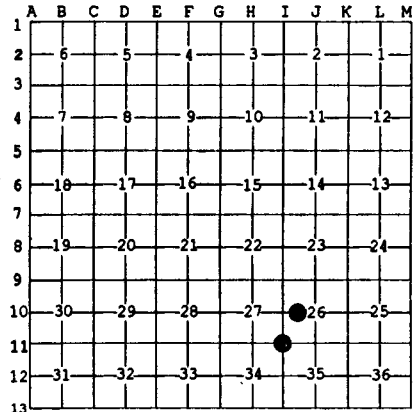


4. Lot No. _____, **Recorded Plat** _____
5. Private Claims _____

8 Aug 15 2001
 111 Jun 19 2001

I, Stephan J. Szyszkoski, in a field survey on _____, 19____ do hereby state that under requirements of P.A. 74, Michigan P.A. of 1970, the corner points mentioned in lines 1 and 2 above were in conformance with regulations and rules therefore as required in the current manual of survey instructions of the United States Department of the Interior, Bureau of Land Management or by a decree of a Court of Law and/or that the corner points mentioned in lines 3, 4 and 5 above were in conformance with the rules of the Michigan Board of Land Surveyors or by a Decree of a Court of Law, established, re-established, monumented, recovered, found as expressed below:

NOTE: Not more than 2 corners, all in the same town and range, may be recorded on this certificate.



A. Description of original monument and accessories and/or subsequent restoration:
 (111) Corner common to Sections 26-27-34-35. 1977: Reestablished by K.L.Sackett RLS. 1" IDx36" iron pipe with 4" aluminum cap. 24" W.Pine N54W 36.0', 6" Maple N76E 10.7', 7" Spruce S53E 45.9'.
 (8-Sec. 26) West 1/16 corner, Section 26. Not established in the original survey.

B. Description of corner evidence found and/or method applied in restoring or reestablishing corner:
 (111) Recovered and accepted the 1977 monument, as described, in good condition, and at record bearing and distance from the 1977 accessories, although it is clear that the distances to the W.Pine and Spruce have been transposed on the record. The W.Pine is now a dead stub with scribing visible, the Spruce a stump with scribing visible, and the Maple is in good condition with scribing visible.
 (8-Sec. 26) Established the corner midway and on a straight line between Quarter corner 1312.25' west and Center of Section 1312.25' east.

C. Description of monument for corner and accessories established to perpetuate locating the position of the corner:
 (111) 1" ID iron pipe with 4" alum. MDNR tablet. Blazed and scribed new wits:
 9" dbl Maple S68E 43.3' "S35 NBT"
 9" W.Spruce S44W 88.7' "S34 NBT"
 6" Maple N32W 51.0' "S27 NBT"
 9" Maple N77E 10.6' the 1977 wit.
 Bearings are magnetic. Distances to notch in lower blaze.
 (8) 1" IDx32" iron pipe with 4" alum. MDNR tablet. Blazed and scribed:
 14" Hemlock N03E 52.7' "1/16S BT"
 7" Dbl Y.Birch N69E 26.0' do
 8" Cedar S10W 13.2' do
 7" Cedar West 12.2' do
 Set squared cedar post adjacent.
 Bearings are magnetic. Distances to notch in lower blaze.



Signed by Stephan J. Szyszkoski Date 10/24/01
 Surveyor's Michigan License No. 33986

For the Michigan Department of Natural Resources - Office of Property Management