

BARAGA

LAND CORNER RECORDATION CERTIFICATE

FILING REQUIREMENT OF ACT 74, MICH. P.A.1970

FOR CORNERS OF--:	LOCATED IN--:	CORNER CODE NUMBER
1. PUBLIC LAND SURVEY _____	T. <u>48</u> N. <u>X</u> , R. <u>31</u> K. <u>W.</u>	<u>J7, K7, I8, K8</u>
2. PROPERTY CONTROLLING IN SECTION _____	T. _____ N. _____, R. _____ E. _____ W. _____	_____
3. MISCELLANEOUS PROPERTY IN SECTION _____	T. _____ N. _____, R. _____ E. _____ W. _____	_____
4. LOT NO. _____, RECORDED PLAT _____		
5. PRIVATE CLAIMS _____		

REGISTER OF DEEDS STAMP AND FILING NUMBER

I, Keith L. Sackett do hereby certify that under requirements of P.A. 74, Michigan P.A. of 1970, the corner points mentioned in lines 1 and 2 above (identified with circles on index code diagram - over) were, in a field survey on see below 19 , established, re-established, monumented, re-monumented, recovered or restored as expressed below and in conformance with regulations and rules therefore as required in the current manual of survey instructions of the United States Department of the Interior, Bureau of Land Management or by a decree of a court of law. Furthermore, that the corner points mentioned in lines 3, 4 and 5 above were, in a field survey on 19 , found, recovered, restored, established or re-established as expressed below and in conformance with the rules of the Michigan State Board of Registration for Land Surveyors or, by a Decree of a Court of law:

A. Description of original monument and accessories and/or subsequent restoration:

- Corner J7: Not found.
- Corner I8: Found 1" I.D. x 5 ft. Iron Pipe set by unknown party.
- Corners K7, K8: Found 30" Iron Pin with 1-3/4" top believed to be established by Cleveland-Cliffs Iron Co.

B. Description of corner evidence found and/or method applied in restoring or re-establishing corner:

- Corner J7: Corner re-established 5-19-75 on line between section corner east and proportion position in Coon Lake west.
- Corner I8: Re-established 6-9-75 from pipe set by unknown party. Has been used as corner many years. Fits good with land calls.
- Corner K7: Re-established 6-9-75 from iron pin which fits with land calls. Has been used as corner many years.
- Corner K8: Re-established 6-9-75 from iron pin which fits with land calls and has been used as corner for many years.

C. Description of monument for corner and accessories established to perpetuate locating the position of the corner:

- | | |
|--|---|
| Corner J7: Set 1" I.D. x 36" Iron Pipe with 4" aluminum cap
13" Sugar N15°W (Mag.) 21.9 ft. 1/4S, NBT
10" Y. Birch S75°W (Mag.) 4.9 ft. 1/4S, NBT | Corner K7: Set 1" I.D. x 24" Iron Pipe with 4" aluminum cap
12" W. Pine N73°W (Mag.) 13.4 ft. S14, NBT
8" Spruce S24°E (Mag.) 10.8 ft. S24, NBT
7" Spruce N45°E (Mag.) 9.5 ft. S13, NBT |
| Corner I8: Set 1" I.D. x 36" Iron Pipe with 4" aluminum cap
10" Spruce S68°E (Mag.) 13.3 ft. 1/4S, NBT
8" Spruce S72°W (Mag.) 19.9 ft. 1/4S, NBT | Corner K8: Set 1" I.D. x 36" Iron Pipe with 4" aluminum cap
8" Maple N60°E (Mag.) 13.4 ft. 1/4S, NBT
14" Oak N31°W (Mag.) 26.0 ft. 1/4S, NBT
Marker tree 4" Maple N60°W (Mag.) 3.3 ft. |

SIGNED BY _____ DATE _____

SURVEYOR'S MICHIGAN REGISTRATION NO. _____

(SEAL)

FOR STATE AND UNITED STATES AGENCIES:

SIGNED BY _____ DATE _____

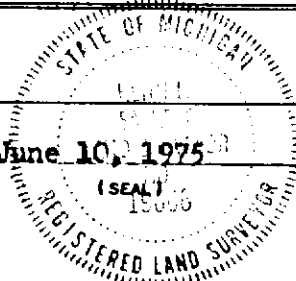
APPROVED AND SIGNED BY Keith L. Sackett

CHIEF OF SURVEY PARTY

Keith L. Sackett

Department of Natural Resources

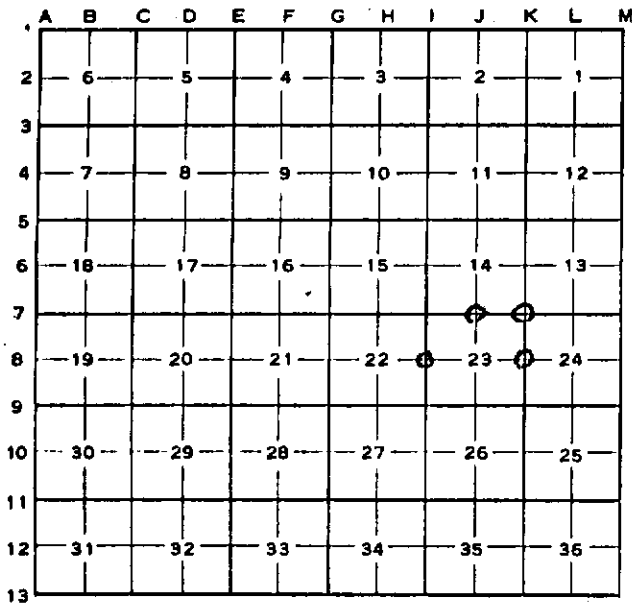
DATE June 10, 1975



SURVEYOR'S MICHIGAN REGISTRATION NO. 19006

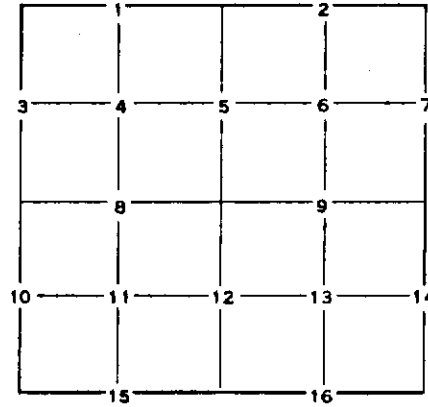
CORNER NUMBERING CODE DIAGRAMS FOR IDENTIFYING LAND CORNER RECORDATIONS AND INDEXING

**FOR PUBLIC LAND SURVEY CORNERS IN THE
T. 48N, R. 31W (MENTIONED OVER)**



Apply letter prefix for corner points encircled above for identifying corner recordation numbers over.

FOR PROPERTY CONTROLLING AND MISC. PROPERTY CORNERS WITHIN THE SECTION (MENTIONED OVER AND EXCLUDE LOT CORNER)



1. Above coded numbers are positioned on 1/16 fractional lines of the section.
2. Township corner code numbers shall be applied to corners of above typical section not numbered.
3. Miscellaneous property corners within a section, located at points other than numbered above, shall be referenced to at least two of above corner code numbers.
4. Private claim corners to be tied to rectangular land corners if possible - sketch required below.

EXPLANATORY SKETCH IF NECESSARY -- BELOW

