

MICHIGAN
DEPARTMENT OF CONSERVATION
FORESTRY DIVISION

LAND CORNER RECORD

T. 48 N.R. 31 W

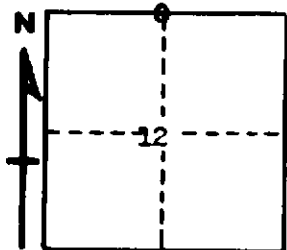
Baraga COUNTY

DESCRIPTION OF CORNER 1/4 Corner for Secs. 1/12

CORNER MONUMENT 1" Iron Pipe with 4" Aluminum Cap

DATE MONUMENT PLACED AND WITNESSED 7/22/65 with J. Magnuson

WITNESSES TO CORNER..... 10" H. Maple (1/4S NBT), N 06° W, 31 Lks.



8" Y. Birch (1/4S NBT), S 76° W, 27 1/2 Lks.

AND

CIRCLE CORNER REGISTERED

DESCRIPTION IN DETAIL AS TO HOW CORNER WAS LOCATED AND IDENTIFIED OR RESTORED.

This Corner was set at 1/2" Iron pipe which checks with (2) two W. Pine Original BT's. W. Pine to NE has bottom face with BT scribe. Stump to SW is rotted with BT written on stake.

SURVEYOR'S SEAL

SIGNED Frank J. Bray DATE 9/13/1965
REGISTERED LAND SURVEYOR