

LAND CORNER RECORDATION CERTIFICATE
 Filing Requirement of Act 74, Mich. P.A. 1970 as Amended

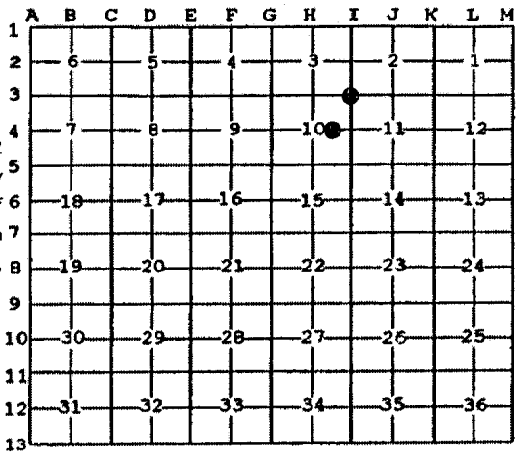
For corners in

<u>Baraga</u> (County)	Located In:	Corner Code #
1. Public Land Survey	T 48N R 31W	13
	T _____ R _____	_____
	T _____ R _____	_____
2. Property Controlling in Section	S T _____ R _____	_____
	S 10 T 48N R 31W	9
	S _____ T _____ R _____	_____
3. Miscellaneous Property in Sec.	S _____ T _____ R _____	_____
	S _____ T _____ R _____	_____
4. Lot No. _____, Recorded Plat _____		
5. Private Claims		

Register of Deeds Stamp & File Number

I, Stephan J. Szyszkoski, in a field survey on 9 05/11/2010 do hereby state that under requirements of P.A. 74, Michigan P.A. of 1970, the corner points mentioned in lines 1 and 2 above were in conformance with regulations and rules therefore as required in the current manual of survey instructions of the United States Department of the Interior, Bureau of Land Management or by a decree of a Court of Law and /or that the corner points mentioned in lines 3, 4 and 5 above were in conformance with the rules of the Michigan Board of Land Surveyors or by a Decree of a Court of Law; established, re-established, monumented, recovered, found as expressed below:

NOTE: Not more than 2 corners, all in the same town and range, may be recorded on this certificate.



A. Description of original monument and accessories and/or subsequent restoration:

(I3) Corner common to Sections 2-3-10-11. 1960 - Corner monumented and recorded by Neal Sperhake RLS #7876 as a perpetuation of a position monumented by N.T.Thompson RLS in 1951. Set 1"x36" iron pipe with Kimberly-Clark Corp. cap. Maple 6" S32W 27 links, Maple 4" S54E 35 links, Y.Birch 14" N20E 32.5 links, Maple 12" N76W 33 links. See Page 80 of 8.5"x11" formatted Land Corner Records, Baraga County.

(9-Sec. 10) East 1/16 corner, Section 10. Not established in the original survey.

B. Description of corner evidence found and/or method applied in restoring or reestablishing corner:

(I3) The 1960 monument was recovered in good condition and at record bearing and distance from three of the four 1960 NBTs. The Maple S32W is now gone. The Y.Birch N20E and the Maple N76W are now rotted stumps. The Sugar SE is in good condition. Accepted the monument as the best available evidence of the position of the original corner.

(9-Sec. 10) Established the corner midway and on a straight line between Quarter corner 1315.70' east and Center of Section 1315.70' west.

C. Description of monument for corner and accessories established to perpetuate locating the position of the corner:

(I3) Fd. 1"ID I.pipe with 4" Kimberly-Clark cap. Set measuring nail with MDNR tag in the side of:
 12" Sugar S52E 23.0' old blazes (1960 NBT)
 4" Sugar S35W 6.4' mrkd "S10 NBT"
 10" Sugar N04W 15.8' "S3 NBT"
 4" Sugar N58E 11.4' "S2 NBT"
 Set sq'd Cedar post adjacent.
 Bearings are magnetic.

(9) Set 1"IDx32" I.pipe with 4" alum. MDNR cap. Set measuring nail with MDNR tag in the side of:
 7" Tamarack S58W 34.2' mrkd "1/16S BT"
 4" Maple N72W 54.9' do
 5" Tamarack N54W 44.5' do
 5" Tamarack N06W 78.3' do
 Set sq'd Cedar post adjacent.
 Bearings are magnetic.

Signed by Stephan J. Szyszkoski
 Surveyor's Michigan License No. 33986

Date 07/07/2010



For the Michigan Department of Natural Resources and Environment, Forest Management Division

16452
16453