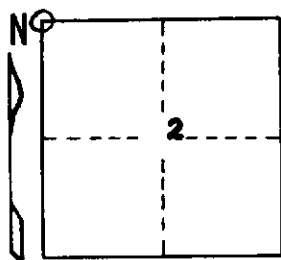


STATE OF MICHIGAN  
DEPARTMENT  
OF  
NATURAL RESOURCES

LAND CORNER RECORD

Baraga COUNTY  
T 48-49N R 32W

DESCRIPTION OF CORNER Section Corner 2, 3, 34, and 35  
CORNER MONUMENT 1" I.D. x 36" iron pipe with 4" aluminum cap  
DATE MONUMENT PLACED AND WITNESSED August 21, 1969  
WITNESSES TO CORNER..... Cedar 15 S52°E 29½ lks. "82, NBT"



Cedar 8 S42½°W 31 lks. "83, NBT"  
AND

CIRCLE CORNER REGISTERED

DESCRIPTION IN DETAIL AS TO HOW CORNER WAS LOCATED AND IDENTIFIED OR RESTORED.

Monument placed from two original bearing trees, a Cedar 18 S70W, still green and with both faces plain and all scribe marks readable; and a Cedar 12 N47W 58, now dead and down, but faces and trace of scribe marks visible. Found scraps of wood in the muck at the corner position, which may have been from the original post. Also found a 4"x4" squared cedar post bearing N30°E 13 links from true corner, set by unknown persons. Many names on BT to southwest and on nearby cruisers' tree, oldest legible date being 1940. Ford Motor Company L. P. on nearby register tree, dated 5/12/49.

SURVEYOR'S SEAL

SIGNED

Arthur O. Enger  
REGISTERED LAND SURVEYOR

DATE

1/28/71

DISTRIBUTION:

County Courthouse  
Area Forester (Regions I & II)  
District or Region Surveyor  
Forestry Div., Lansing

R 4047  
Rev. 10/68