

STATE OF MICHIGAN  
DEPARTMENT  
OF  
NATURAL RESOURCES

LAND CORNER RECORD

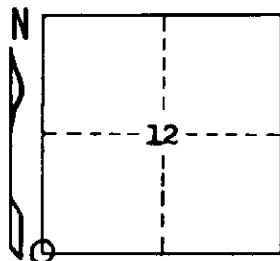
Baraga COUNTY  
T 48 N R 32 W

DESCRIPTION OF CORNER Section Corner 11, 12, 13, and 14

CORNER MONUMENT 1" I.D. x 36" iron pipe with 4" aluminum cap

DATE MONUMENT PLACED AND WITNESSED June 15, 1970

WITNESSES TO CORNER..... Sugar Maple 11 N59°E (magnetic) 39.9 ft. "S12, NBT"



Sugar Maple 15 S13°E (magnetic) 18.0 ft. "S13, NBT"

Sugar Maple 12 S27°W (magnetic) 24.1 ft. "S14, NBT"

AND

CIRCLE CORNER REGISTERED

DESCRIPTION IN DETAIL AS TO HOW CORNER WAS LOCATED AND IDENTIFIED OR RESTORED.

Found a 2" x 2" x 5' squared maple post set in a pile of rocks; also rotted off portion of a 3" x 3" squared ironwood stake set by MDSH surveyors Barber in 1935 or Bergh in 1939.

Corner perpetuated as found, even though double proportionate measurement between original corners 2 miles N, 2 miles S, 1 mile E, and 2 miles W places corner position S20°E .985 chains from this point. No certainty as to whether pile of stones ante-dates or post-dates the ironwood stake; local inquiry revealed no knowledge. Position shows some agreement with Soo Line RR right-of-way map as to distance between corner and their right-of-way north of this corner. Position has been used by local residents for an undetermined length of time. The undersigned doubts that this is the original corner location, but was reluctant to change it.

SURVEYOR'S SEAL

DISTRIBUTION:

SIGNED

*Arthur O. Enger*  
REGISTERED LAND SURVEYOR  
Arthur O. Enger

DATE

August 31, 1971

County Courthouse  
Area Forester (Regions I & II)  
District or Region Surveyor  
Forestry Div., Lansing

R 4047  
Rev. 10/68