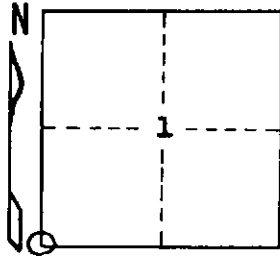


STATE OF MICHIGAN
DEPARTMENT
OF
NATURAL RESOURCES

LAND CORNER RECORD

Baraga COUNTY
T 48 N R 32 W

DESCRIPTION OF CORNER Section Corner 1, 2, 11, and 12
CORNER MONUMENT 1" I.D. x 36" iron pipe with 4" aluminum cap.
DATE MONUMENT PLACED AND WITNESSED June 15, 1970
WITNESSES TO CORNER..... Red Maple 8 S39°E (magnetic) 25.1 ft. "S12, NBT"



Red Maple 10 N17°W (magnetic) 34.1 ft. "S 2, NBT"
Sugar Maple 7 N35°E (magnetic) 35.1 ft. "S 1, NBT"
AND

CIRCLE CORNER REGISTERED

DESCRIPTION IN DETAIL AS TO HOW CORNER WAS LOCATED AND IDENTIFIED OR RESTORED.

Found a 3/4" I.D. x 36" iron pipe N42°W 37.3 links from corner, used for approximate corner. This pipe may have been set from a traverse by MDSH surveyor in 1943.

Corner re-established by double proportionate measurement from corners 1 mile to N, S, E, and W. Original field note calls and measured distances along E & W section lines in this area show substantial agreement, but not on N & S lines. Undersigned suspects that at least some of the N & S lines were never actually run in the original survey. All N & S lines are considerably shorter than the record distances.

SURVEYOR'S SEAL

DISTRIBUTION:

SIGNED

Arthur O. Enger
REGISTERED LAND SURVEYOR
Arthur O. Enger

DATE

August 31, 1971

County Courthouse
Area Forester (Regions I & II)
District or Region Surveyor
Forestry Div., Lansing

R 4047
Rev. 10/68