

STATE OF MICHIGAN
DEPARTMENT
OF
NATURAL RESOURCES

LAND CORNER RECORD

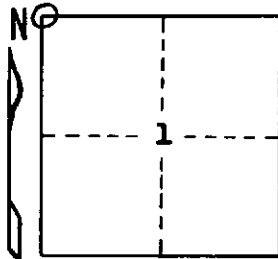
Baraga COUNTY
T 48-49 N R 32 W

DESCRIPTION OF CORNER Section Corner 1, 2, 35, and 36

CORNER MONUMENT 1" I.D. x 36" iron pipe with 4" aluminum cap.

DATE MONUMENT PLACED AND WITNESSED September 5, 1969

WITNESSES TO CORNER..... Y. Birch 16 S30°E (magnetic) 48 links "S1, NBT"



Cedar 6 N10°W (magnetic) 25 links "S35, NBT"

Cedar 8 S55°W (magnetic) 49½ links "S35, NBT"

AND

CIRCLE CORNER REGISTERED

DESCRIPTION IN DETAIL AS TO HOW CORNER WAS LOCATED AND IDENTIFIED OR RESTORED.

Found a 3/4" O.D. Iron pipe and a squared cedar post 1½ links SE of corner.

Monument placed from 3 original bearing trees, identified by axe and scribe marks. The 2 maples are still alive with scribe marks visible, while the cedar is a long-dead stub with axe marks only. No trace of yellow birch BT. Cruiser's register tree nearby.

SURVEYOR'S SEAL

DISTRIBUTION:

SIGNED

Arthur O. Enger
REGISTERED LAND SURVEYOR
Arthur O. Enger

DATE

September 2, 1971

County Courthouse
Area Forester (Regions I & II)
District or Region Surveyor
Forestry Div., Lansing

R 4047
Rev. 10/68