

STATE OF MICHIGAN
DEPARTMENT
OF
NATURAL RESOURCES

LAND CORNER RECORD

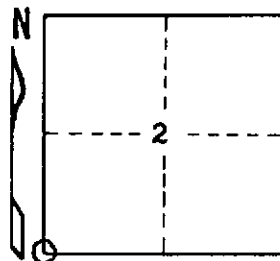
Baraga COUNTY
T 48N R 32W

DESCRIPTION OF CORNER Section Corner 2, 3, 10, and 11

CORNER MONUMENT 1" I.D. x 36" iron pipe with 4" aluminum cap

DATE MONUMENT PLACED AND WITNESSED July 28, 1971

WITNESSES TO CORNER..... W. Birch 10 N88°E (magnetic) 20.6 ft. "S2, NBT"



W. Birch 10 S40½°W (magnetic) 43.4 ft. "S10, NBT"

Red Maple 4 N47½°W (magnetic) 18.6 ft. "S3, NBT"

AND

CIRCLE CORNER REGISTERED

DESCRIPTION IN DETAIL AS TO HOW CORNER WAS LOCATED AND IDENTIFIED OR RESTORED.

Found a 1" I.D. iron pipe S82½°E 31.0 ft. from corner established herein, believed to be the terminus of a traverse line run by MDSH surveyor Bergh in 1943, intended to mark only the approximate corner location.

Corner re-established by double proportionate measurement from original corners 1 mile N, 2 miles E, 3 miles S, and a river crossing, believed to be accurate, 11.29 ch. W. Measured distance on E & W proportional line is 170.89 ch., record distance is 171.24 ch., for an average difference of about 16 links per mile shorter than record. Similar shortages were found in other E & W section lines south of this one.

SURVEYOR'S SEAL

DISTRIBUTION:

SIGNED

Arthur O. Enger
REGISTERED LAND SURVEYOR
Arthur O. Enger

DATE September 22, 1971

County Courthouse
Area Forester (Regions I & II)
District or Region Surveyor
Forestry Div., Lansing

R 4047
Rev. 10/68