

STATE OF MICHIGAN
DEPARTMENT
OF
NATURAL RESOURCES

LAND CORNER RECORD

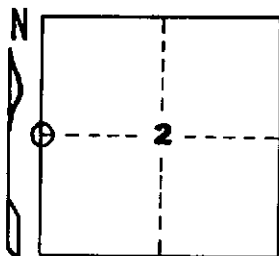
Baraga COUNTY
T 48 N R 32 W

DESCRIPTION OF CORNER 1/4 corner between Sections 2 and 3

CORNER MONUMENT 1" I.D. x 36" iron pipe with 4" aluminum cap

DATE MONUMENT PLACED AND WITNESSED August 27, 1969

WITNESSES TO CORNER..... W. Pine 17 S57°E (magnetic) 29.0 ft. "1/4S, NBT"



Red Maple 9 N21°E (magnetic) 14.2 ft. "1/4S, NBT"

Red Maple 8 S17°W (magnetic) 17.5 ft. "1/4S, NBT"

AND

CIRCLE CORNER REGISTERED

DESCRIPTION IN DETAIL AS TO HOW CORNER WAS LOCATED AND IDENTIFIED OR RESTORED.

Corner re-established proportionately on line between section corner
38.400 ch. north and section corner 39.783 ch. south.

SURVEYOR'S SEAL

DISTRIBUTION:

SIGNED

Arthur O. Enger
REGISTERED LAND SURVEYOR
Arthur O. Enger

DATE

September 22, 1971

County Courthouse
Area Forester (Regions I & II)
District or Region Surveyor
Forestry Div., Lansing

R 4047
Rev. 10/68