

LAND CORNER RECORDATION CERTIFICATE
Filing Requirement of Act 74, Mich. P.A. 1970

For corners in
Baraga
(County)

Located in: Corner Code #

1. Public Land Survey	T 48N R 32N	E5
	T R	
	T R	
	T R	
2. Property Controlling In Section	S 16 T 48N R 32N	1
	S T R	
3. Miscellaneous Property in Sec.	S T R	
	S T R	

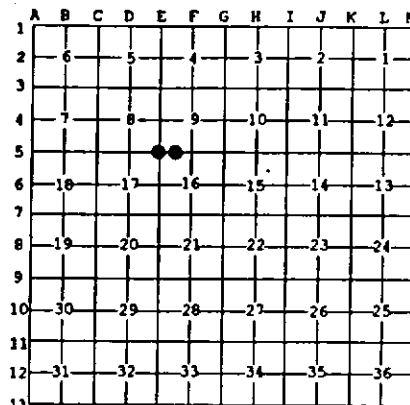
Register of Deeds Stamp & File Number

4. Lot No. _____, Recorded Plat _____
5. Private Claims _____

Apr 27 1998

I, Stephan J. Szyszkoski, in a field survey on _____, 19____ do hereby state that under requirements of P.A. 74, Michigan P.A. of 1970, the corner points mentioned in lines 1 and 2 above were in conformance with regulations and rules therefore as required in the current manual of survey instructions of the United States Department of the Interior, Bureau of Land Management or by a decree of a Court of Law and for that the corner points mentioned in lines 3, 4 and 5 above were in conformance with the rules of the Michigan Board of Land Surveyors or by a Decree of a Court of Law, established, re-established, monumented, recovered, found as expressed below.

NOTE: Not more than 2 corners, all in the same town and range, may be recorded on this certificate.



A. Description of original monument and accessories and/or subsequent restoration:

(E5) Corner common to Sections 8-9-16-17. Corner perpetuated in 1975 by Keith L. Sackett who accepted a position monumented by the Michigan State Highway Dept. in 1944. Set 1" I.D. x 36" iron pipe with 4" aluminum cap. 5' Spruce N01E 27.3', 7' Spruce S83E 30.3', 7' Spruce S37N 12.4'.

(1-Sec. 16) West 1/16 corner between Sections 9-16. Corner established in 1975 by Keith L. Sackett midway and on line between Section corner west and Quarter corner east. 1" I.D. x 36" iron pipe with 4" aluminum cap. 7' cherry S38W 8.1', 16" Elm N21E 20.9'. Found no subsequent record.

B. Description of corner evidence found and/or method applied in restoring or reestablishing corner.

(E5) Recovered the 1975 monument as described, a 1" ID-iron pipe capped with a 4" cast aluminum State of Michigan tablet, in good condition, and at record bearing and distance from the remaining spruce NBT NE, now a standing dead stub. The other NBTs are dead and rotted. Left the monument in place and marked four new witnesses as described below. Corner recovered and re-witnessed by B.Wheeler and D.Lampela, Baraga District Office.

(1-Sec. 16) Recovered the 1975 monument as described, a 1" ID iron pipe capped with a 4" cast aluminum State of Michigan tablet, in good condition, and at record bearing and distance from the 1975 witnesses. The Cherry in good condition and the Elm dead and broken. According to my measure, the monument is 2.69' west and 0.19' north of the position intended in 1975. I accept the monument as a careful and faithful determination of the position of the corner. Left the monument in place and marked three new accessories as described below. Corner recovered and re-witnessed by D.Lampela and B.Wheeler, Baraga District Office.

C. Description of monument for corner and accessories established to perpetuate locating the position of the corner.

(E5) Found 1" pipe with 4" aluminum cap.

(1) Found 1" pipe with 4" NBRK cap.

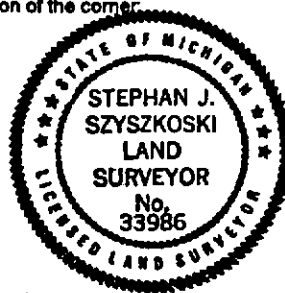
Blazed and scribed the following:

Blazed and scribed the following new bearing trees:

11" W. Spruce N05E 30.4' "S9 NBT"
11" W. Spruce N55E 41.5' "S9 NBT"
9" Balsam S18E 25.0' "S16 NBT"
4" Balsam S58W 22.0' "S17 NBT"

8" Balsam S83W 10.1' "1/16S BT"
7" Sugar N09E 28.5' "1/16S BT"
8" Sugar N66E 31.3' "1/16S BT"
10" Cherry S39W 8.1' w/ overgrown scar and scribing visible. Placed a squared balsam post adjacent. Bearings are magnetic. Distances to notch in lower blaze.

Bearings are magnetic. Dist. to notch in lower blaze.



Signed by Stephan J. Szyszkoski

Date 6/10/98

Surveyor's Michigan License No. 33986

For the Michigan Department of Natural Resources - Forest Management Division