

LAND CORNER RECORDATION CERTIFICATE
Filing Requirement of Act 74, Mich. P.A. 1970

For corners in

Baraga (County)	Located In:	Corner Code #
1. Public Land Survey	T ___ R ___	_____
	T ___ R ___	_____
	T ___ R ___	_____
	T ___ R ___	_____
2. Property Controlling In Section	S <u>16</u> T <u>48N</u> R <u>32W</u>	<u>8</u>
	S <u>16</u> T <u>48N</u> R <u>32W</u>	<u>15</u>
3. Miscellaneous Property in Sec.	S ___ T ___ R ___	_____
	S ___ T ___ R ___	_____

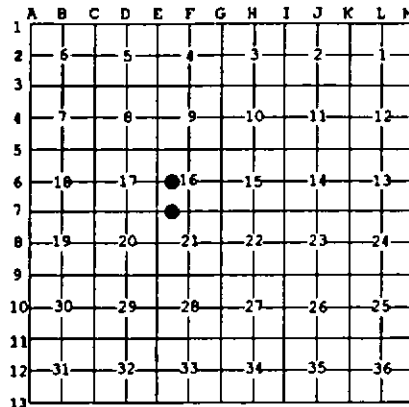
Register of Deeds Stamp & File Number

4. Lot No. _____, Recorded Plat _____
5. Private Claims _____

15 Apr 28 1998
8 Apr 27 1998

I, Stephan J. Szyszkoski, in a field survey on _____, 19____ do hereby state that under requirements of P.A. 74, Michigan P.A. of 1970, the corner points mentioned in lines 1 and 2 above were in conformance with regulations and rules therefore as required in the current manual of survey instructions of the United States Department of the Interior, Bureau of Land Management or by a decree of a Court of Law and for that the corner points mentioned in lines 3, 4 and 5 above were in conformance with the rules of the Michigan Board of Land Surveyors or by a Decree of a Court of Law; established, re-established, monumented, recovered, found as expressed below.

NOTE: Not more than 2 corners, all in the same town and range, may be recorded on this certificate.



A. Description of original monument and accessories and/or subsequent restoration:

(8-Sec. 16) West 1/16 corner, Section 16. Corner not established in the original survey. Found no subsequent record.
(15-Sec. 16) West 1/16 corner between Sections 16-21. Corner not established in the original survey. Found no subsequent record.

B. Description of corner evidence found and/or method applied in restoring or reestablishing corner:

(8-Sec. 16) Found no evidence of prior monumentation at the corner position. Established the corner midway and on a straight line between Quarter corner 1313.51' West and Center of Section 1313.51' East. At the position for the corner, I placed a 1" ID x 32" iron pipe capped with a 4" dia. cast aluminum MDNR tablet, appropriately stamped, and set in a rock mound 2.5' in dia. and 2' high. Corner placed and witnessed by D.Lampela and B.Wheeler, Baraga District Office.
(15-Sec. 16) Found no evidence of prior monumentation at the corner position. Established the corner midway and on a line of mean true bearing between Section corner 1308.36' West and Quarter corner 1308.36' East. At the position for the corner, I placed a 1" ID x 32" iron pipe capped with a 4" dia. cast aluminum MDNR tablet, appropriately stamped. Corner placed and witnessed by D.Lampela and B.Wheeler, Baraga District Office.

C. Description of monument for corner and accessories established to perpetuate locating the position of the corner:

(8) Set 1" pipe with 4" MDNR cap. Blazed and scribed the following: 4" Tamarack S32W 6.20' "1/16S BT" 12" W. Birch N20W 32.7' "1/16S BT" 15" Spruce N71E 58.75' "1/16S BT" Set PK nail and washer in Power pole S05W 35.40'. Corner is on East side of creek. Bearings are magnetic. Distances to notch in lower blaze of trees.	(15) Set 1" pipe with 4" MDNR cap. Blazed and scribed the following: 6" B. Spruce S80E 9.65' "1/16S BT" 6" B. Spruce S30E 41.6' "1/16S BT" 18" White Pine S47W 25.9' "1/16S BT" 9" B. Spruce N07W 9.05' "1/16S BT" Bearings are magnetic. Distances to notch in lower blaze. Squared a 2" Balsam S15E 4.3'. Note: monument leans some to SW. Top Center is the mark.
--	---



Signed by Stephan J. Szyszkoski Date 6/10/98
Surveyor's Michigan License No. 33986

For the Michigan Department of Natural Resources - Forest Management Division