

59.

LAND CORNER RECORDATION CERTIFICATE
Filing Requirement of Act 74, Mich. P.A. 1970

For corners in
Baraga

(County)	Located In:	Corner Code \neq f
1. Public Land Survey	T <u>48N</u> R <u>32W</u>	<u>D9</u>
	T _____ R _____	_____
	T _____ R _____	_____
	T _____ R _____	_____
2. Property Controlling in Section	S <u>20</u> T <u>48N</u> R <u>32W</u>	<u>3</u>
	S <u>20</u> T <u>48N</u> R <u>32W</u>	<u>9</u>
3. Miscellaneous Property in Sec.	S _____ T _____ R _____	_____
	S _____ T _____ R _____	_____

Register of Deeds Stamp & File Number

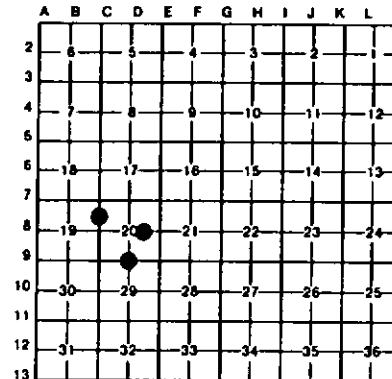
4. Lot No. _____, Recorded Plat _____
 5. Private Claims _____

9 November 04, 1993

D9 November 03, 1993

I, Stephan J. Szyszkoski, in a field survey on 3 November 02, 1993, 19_____, do hereby certify that under requirements of P.A. 74, Michigan P.A. of 1970, the corner points mentioned in lines 1 and 2 above were in conformance with regulations and rules therefore as required in the current manual of survey instructions of the United States Department of the Interior, Bureau of Land Management or by a decree of a Court of Law and/or that the corner points mentioned in lines 3, 4 and 5 above were in conformance with the rules of the Michigan Board of Land Surveyors or by a Decree of a Court of Law; established, re-established, monumented, re-monumented, recovered, found as expressed below:

NOTE: Not more than 4 corners, all in the same town and range, may be recorded on this certificate.



A. Description of original monument and accessories and/or subsequent restoration:

(D9) Quarter corner common to Sections 20-29. Corner established in 1852 by Guy H. Carleton. Original post referenced by the following bearing trees: Sugar 12 S35E 43 links, Sugar 10 N40W 82 links. Found no subsequent record.
 (3-Sec. 20) North 1/16 corner between Sections 19-20. Corner not established in the original survey. Found no subsequent record.
 (9-Sec. 20) East 1/16 corner of Section 20. Corner not established in the original survey. Found no subsequent record.

B. Description of corner evidence found and/or method applied in restoring or reestablishing corner:

(D9) Original post and accessories not recovered. Found no acceptable evidence of the position of the original corner. Reestablished the corner midway and on a straight line between Section corners 2647.55' east and west, being the proportionate position. At the position for the corner, I placed a 1" I.D. x32" iron pipe capped with a 4" dia. cast aluminum MDNR tablet.
 (3-Sec. 20) Found no evidence of prior monumentation. Established the corner midway and on a straight line between section corner 1312.76' north and quarter corner 1312.76' south. At the position for the corner, I placed a 1" I.D. x32" iron pipe capped with a 4" dia. cast aluminum MDNR tablet.
 (9-Sec. 20) Found no evidence of prior monumentation. Established the corner midway and on a straight line between the 1/4 corner common to Section 20-21, and the center of section 20 (non-monumented intersection of 1/4 lines). At the position for the corner, I placed a 1" I.D. x32" iron pipe capped with a 4" dia. cast aluminum MDNR tablet.

C. Description of monument for corner and accessories established to perpetuate locating the position of the corner:

(D9) Set 1" pipe with 4" aluminum cap. Blazed and scribed the following new bearing trees: 24" W. Pine S88W 3.2' "1/4S NBT" 12" W. Pine S01W 41.1' "1/4S NBT" 12" Maple S62E 18.0' "1/4S NBT" 18" W. Pine N33W 50.1' "1/4S NBT" Placed a 3" squared maple post 1' north.	(3) Set 1" pipe with 4" aluminum cap. Blazed and scribed the following bearing trees: 6" Spruce N75E 21.2' "1/16S BT" 7" Spruce S05E 53.5' "1/16S BT" 14" Tamarack S60W 35.6' "1/16S BT" 5" Spruce N33W 19.7' "1/16S BT" Placed a squared spruce post 1 ft. north of the corner.	(9) Set 1" pipe with 4" aluminum cap. Blazed and scribed the following bearing trees: 12" W. Pine S78E 35.3' "1/16S BT" 4" Balsam N30E 6.0' "1/16S BT" 9" Cedar N58W 44.4' "1/16S BT" 12" W. Pine S22W 27.45' "1/16S BT" Placed a 3" squared cedar post 1' south.
--	--	---

Signed by Stephan J. Szyszkoski
 Surveyor's Michigan License No. 33986

Date 11/17/93

