

LAND CORNER RECORDATION CERTIFICATE
Filing Requirement of Act 74, Mich. P.A. 1970 as Amended

For corners in

<u>Baraga</u> (County)	Located In:	Corner Code #
1. Public Land Survey	T48N R 32W	I9
	T48N R 32W	I13
	T_____ R_____	_____
	S_____ T_____ R_____	_____
2. Property Controlling in Section	S_____ T_____ R_____	_____
	S_____ T_____ R_____	_____
3. Miscellaneous Property in Sec.	S_____ T_____ R_____	_____
	S_____ T_____ R_____	_____
4. Lot No. _____, Recorded Plat _____		
5. Private Claims		

I13 Oct 18 2007
I09 Aug 13 2007

I, Stephan J. Szyszkoski, in a field survey on _____, 20____ do hereby state that under requirements of P.A. 74, Michigan P.A. of 1970, the corner points mentioned in lines 1 and 2 above were in conformance with regulations and rules therefore as required in the current manual of survey instructions of the United States Department of the Interior, Bureau of Land Management or by a decree of a Court of Law and /or that the corner points mentioned in lines 3, 4 and 5 above were in conformance with the rules of the Michigan Board of Land Surveyors or by a Decree of a Court of Law; established, re-established, monumented, recovered, found as expressed below:

NOTE: Not more than 2 corners, all in the same town and range, may be recorded on this certificate.

A. Description of original monument and accessories and/or subsequent restoration:

(I9) Corner common to Sections 22-23-26-27. 1852 - Established by Guy Carleton Deputy Surveyor: Set post. Bearing trees: Cedar 12 N47E 26 links, Cedar 18 S22W 44 links. 1965 - Remonumented by F.J.Bray RLS: This corner was replaced from possible Cedar BT upper face with no Iron marks, down. Blazed trees in area. Swamp edges check fairly good. Set 1" iron pipe with 4" aluminum cap. NBTs: 10" W.Birch S16W 36 links, 10" S.Maple N16W 45 links.

(I13) Corner common to Sections 34-35 T48N-R32W and Sections 2-3 T47N-R32W. 1846 - Established by Wm.A.Burt Deputy Surveyor: Set Fir post. Spruce 10 N16E 21 links, Spruce 8 N6W 44 links. Found no subsequent record.

B. Description of corner evidence found and/or method applied in restoring or reestablishing corner:

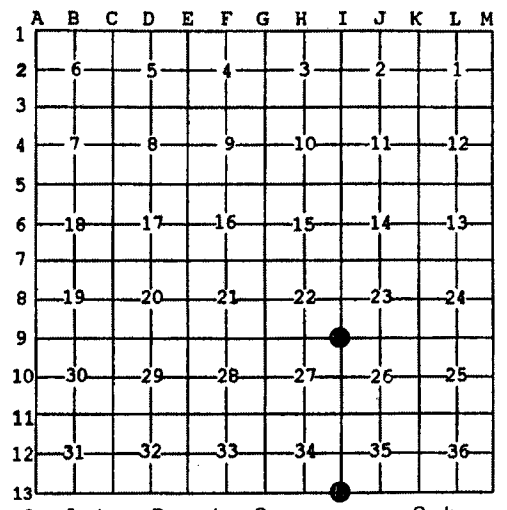
(I9) Found the 1965 monument in good condition and at record bearing and distance from the remaining 1965 NBT Maple NW, in good condition. The Birch NBT and the original BTs were not recovered. Accepted the monument as the best available evidence of the position of the original corner.

(I13) The original post and accessories were not recovered. Found no evidence of the position of the original corner on the ground. Reestablished the corner by single proportionate measurement to the original record, on the Township line between Quarter corner 7918.75' West and Township corner 10558.34' East.

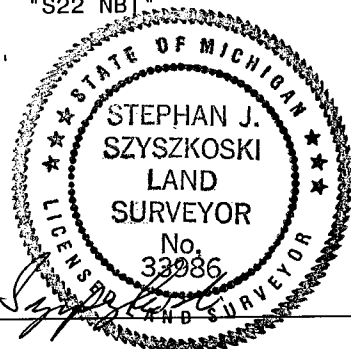
C. Description of monument for corner and accessories established to perpetuate locating the position of the corner:

(I9) Found 1"ID I.pipe with 4" alum. MDNR cap. Set measuring nail with MDNR tag in the side of:
15" Maple N10W 29.9' scribing visible (1965 NBT)
3" Sugar N19E 17.6' mrkd "S23 NBT"
11" Maple S27E 25.3' "S26 NBT"
4" Sugar N61W 12.5' "S22 NBT"
Bearings are magnetic.
Squared a 4" Sugar N55W 1.2'

(I13) Set 1"IDx48" I.pipe with 4" alum. MDNR cap. Set measuring nail with MDNR tag in the side of:
7" Spruce S75E 27.1' mrkd "S2 NBT"
3" Spruce S67W 5.0' "S3 NBT"
11" Cedar N45W 23.05' "S34 NBT"
6" Spruce N09E 2.25' "S35 NBT"
Squared a 4" Spruce N44E 0.8' (no nail)
Bearings are magnetic.



Register of Deeds Stamp & File Number



Signed by Stephan J. Szyszkoski Date 11/26/07

Surveyor's Michigan License No. 33986