

LAND CORNER RECORDATION CERTIFICATE

FILING REQUIREMENT OF ACT 74, MICH. P.A.1970

FOR CORNERS OF--:	LOCATED IN--:	CORNER CODE NUMBER
1. PUBLIC LAND SURVEY_____	T. 48 N. ^{N.} , R. 33 W. ^{W.}	F5, G4
2. PROPERTY CONTROLLING IN SECTION_____	, T. _____, N. S., R. _____, E. W.	_____
3. MISCELLANEOUS PROPERTY IN SECTION_____	, T. _____, N. S., R. _____, E. W.	_____
4. LOT NO. _____, RECORDED PLAT _____		
5. PRIVATE CLAIMS _____		

REGISTER OF DEEDS STAMP AND FILING NUMBER

I, Keith L. Sackett do hereby certify that under requirements of P.A. 74, Michigan P.A. of 1970, the corner points mentioned in lines 1 and 2 above (identified with circles on index code diagram - over) were, in a field survey on June 4 1975, established, re-established, monumented, re-monumented, recovered or restored as expressed below and in conformance with regulations and rules therefore as required in the current manual of survey instructions of the United States Department of the Interior, Bureau of Land Management or by a decree of a court of law. Furthermore, that the corner points mentioned in lines 3, 4 and 5 above were, in a field survey on _____ 19____, found, recovered, restored, established or re-established as expressed below and in conformance with the rules of the Michigan State Board of Registration for Land Surveyors or, by a Decree of a Court of law:

- A. Description of original monument and accessories and/or subsequent restoration:
- Corner F5: Original monument or accessories not found.
 - Corner G4: Original monument or accessories not found.
- B. Description of corner evidence found and/or method applied in restoring or re-establishing corner:
- Corner F5: Found old post and blazed east-west line signature tree with location poster on 12" cedar S21°W (Mag.) 10.4 ft.
Signature tree with location poster on 8" cedar S23°E (Mag.) 20.0 ft.
Fits good with other corners in area.
 - Corner G4: Re-established at intersection of blazed lines. Signature tree
5" Cedar N79°W (Mag.) 22.0 ft.
Fits good with other corners in area.
- C. Description of monument for corner and accessories established to perpetuate locating the position of the corner:
- Corner F5: Set 1" I.D. x 36" iron pipe with 4" aluminum cap.
6" Cedar S21°E (Mag.) 19.4 ft. 1/4 S, NBT
5" Cedar S25°W (Mag.) 15.0 ft. 1/4 S, NBT
 - Corner G4: Set 1" I.D. x 36" iron pipe with 4" aluminum cap.
9" Cedar West (Mag.) 14.5 ft. 1/4 S, NBT
12" Cedar N03°W (Mag.) 11.3 ft. 1/4 S, NBT

SIGNED BY _____ DATE _____

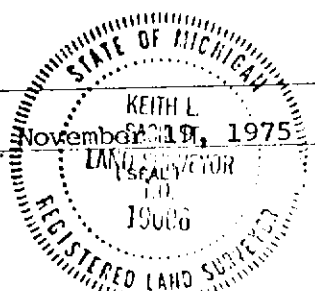
SURVEYOR'S MICHIGAN REGISTRATION NO. _____ (SEAL)

FOR STATE AND UNITED STATES AGENCIES:

SIGNED BY _____ DATE _____

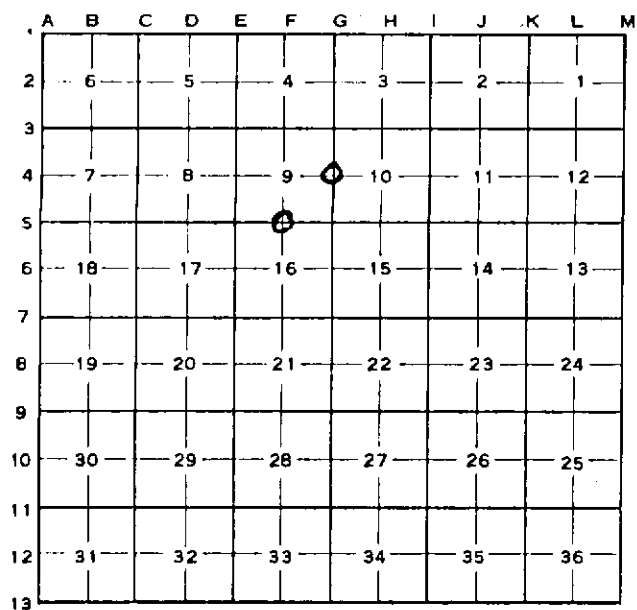
APPROVED AND SIGNED BY Keith L. Sackett DATE November 23, 1975
CHIEF OF SURVEY PARTY
MICHIGAN REGISTERED LAND SURVEYOR
 Keith L. Sackett
 Department of Natural Resources

SURVEYOR'S MICHIGAN REGISTRATION NO. 19006



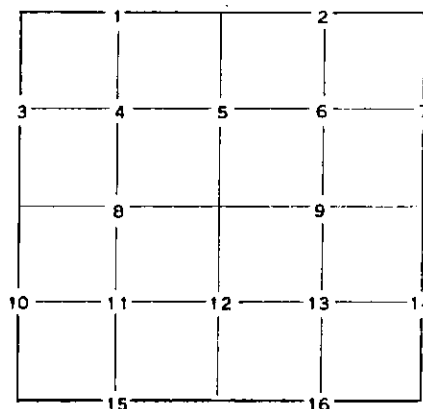
CORNER NUMBERING CODE DIAGRAMS FOR IDENTIFYING LAND CORNER RECORDATIONS AND INDEXING

FOR PUBLIC LAND SURVEY CORNERS IN THE
T. 48N, R. 33W (MENTIONED OVER)



Apply letter prefix for corner points encircled above for identifying corner recordation numbers over.

FOR PROPERTY CONTROLLING AND MISC. PROPERTY CORNERS WITHIN THE SECTION (MENTIONED OVER AND EXCLUDE LOT CORNER)



1. Above coded numbers are positioned on 1/16 fractional lines of the section.
2. Township corner code numbers shall be applied to corners of above typical section not numbered.
3. Miscellaneous property corners within a section, located at points other than numbered above, shall be referenced to at least two of above corner code numbers.
4. Private claim corners to be tied to rectangular land corners if possible - sketch required below.

EXPLANATORY SKETCH IF NECESSARY -- BELOW