

LAND CORNER RECORDATION CERTIFICATE
Filing Requirement of Act 74, Mich. P.A. 1970

For corners in
Baraga
 (County)

Located In: Corner Code #/

1. Public Land Survey	T 48N R 33W	A7
	T 48N R 33W	D3
	T R	
	T R	
2. Property Controlling in Section	S 8 T 48N R 33W	2
	S T R	
3. Miscellaneous Property in Sec	S T R	
	S T R	

Register of Deeds Stamp & File Number

4. Lot No. _____, Recorded Plat _____
 5. Private Claims _____

2 August 26, 1993

D3 August 26, 1993

I, Stephan J. Szyszkoski, in a field survey on A7 September 13, 1993, 19_____, do hereby certify that under requirements of P.A. 74, Michigan P.A. of 1970, the corner points mentioned in lines 1 and 2 above were in conformance with regulations and rules therefore as required in the current manual of survey instructions of the United States Department of the Interior, Bureau of Land Management or by a decree of a Court of Law and/or that the corner points mentioned in lines 3, 4 and 5 above were in conformance with the rules of the Michigan Board of Land Surveyors or by a Decree of a Court of Law, established, re-established, monumented, re-monumented, recovered, found as expressed below.

NOTE: Not more than 4 corners, all in the same town and range, may be recorded on this certificate.

A. Description of original monument and accessories and/or subsequent restoration:

(A7) Section corner common to Sections 18-19, T48N-R33W, and 13-24 T48N-R34W. Corner noted on a map of survey by N.T. Thompson dated May 3, 1952 as being monumented by a 1/2" square iron pin and the following NBTs: 2 1/2" Mp NW 27.7', 2" Mp SW 29.8', 3" Bal SE 30.7'. Iron pin found and accepted by A.O. Enger in 1973. Enger marked the following witnesses: Cedar 5 S18 1/2W 52.3', Cedar 4 S18E 34.8', 1" iron pipe S02W 33.13'.

(D3) Quarter corner common to Sections 5-8. Original corner position perpetuated in 1959 by Billy D. Buckler, A.L.S. with 1" pipe/4" brass cap and the following NBTs: 11" Cedar N30W 60 links, marked 1/4SNBT; 10" Cedar N18E 91 links, marked 1/4SNBT. Found no subsequent record.

(2-Sec. 8) East 1/16 corner between sections 5-8. Corner not established in the original survey. Found no subsequent record.

B. Description of corner evidence found and/or method applied in restoring or reestablishing corner:

(A7) Found and accepted square iron pin approx. 8" below the gravel surface of old M-28. Recovered N.T. Thompson accessories as follows: 5" maple with old blaze Southwest 29.8', 10" balsam with old blaze Southeast 30.7'. Recovered Enger's accessories as follows: 9" Cedar S21W 52.1' blazed and scribed, 5" Cedar S18E 34.5' blazed and scribed, South 33.1' 1" iron pipe, projecting 3 ft. Placed a 7" long spike directly above the monument. Marked two new witnesses as described below.

(D3) Found and accepted a 1" iron pipe capped with a 4" brass Mich. Dept. of Conservation cap at record bearing and distance from the 1959 NBTs and from the remains of the original Cedar BT N42W 13 links, noted in the 1959 record, now a badly rotted stump with no sign of iron marks. The 1959 11" cedar is now 18", in good condition, with blazes overgrown. The 10" cedar is also 18" dia. in good condition. Both trees have good scars. Marked two new bearing trees as described below.

(2-Sec. 8) Found no evidence of prior monumentation at the corner location. Established the corner midway and on a straight line between quarter corner and section corner 1317.61' west and east. At the position for the corner, I placed a 1"x32" iron pipe capped with a 4" dia. cast aluminum MDNR tablet. From the corner monumented, an east-west blue paint line is 9' south. The corner is approximately 100' east of U.S. 41 station 296+00 and is 197' south of the centerline of the highway pavement.

C. Description of monument for corner and accessories established to perpetuate locating the position of the corner:

(A7) Found square iron pin, buried. blazed and scribed the following new bearing trees:

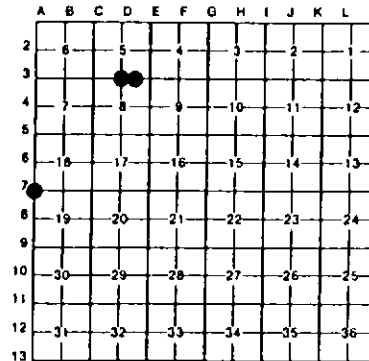
9" Cedar S38E 43.5' "S19 NBT"
 7" Cedar S10W 28.8' "S24 NBT"

(D3) Found 1" pipe with 4" brass cap.

Blazed and scribed the following new bearing trees:
 8" Spruce S04E 12.9' "1/4S NBT"
 16" Cedar N20W 13.9' "1/4S NBT"
 a cut line extends north from the corner approx. 580' to the highway.

(2) Set a 1" pipe with a 4" MDNR cap. Blazed and scribed the following bearing trees:

14" Cedar N41W 42.9' "1/16S BT"
 12" Cedar N13E 42.2' "1/16S BT"
 18" Cedar S33E 35.5' "1/16S BT"
 Center of a 4"x4" square concrete R/W marker bears North 44.2'
 Center of a 4"x4" square concrete R/W marker bears S20W, 10.4'



Signed by Stephan J. Szyszkoski

Surveyor's Michigan License No. 33986

Date 9-16-93