

LAND CORNER RECORDATION CERTIFICATE
Filing Requirement of Act 74, Mich. P.A. 1970

For corners in
Baraga

(County)

Located In:

Corner Code \neq

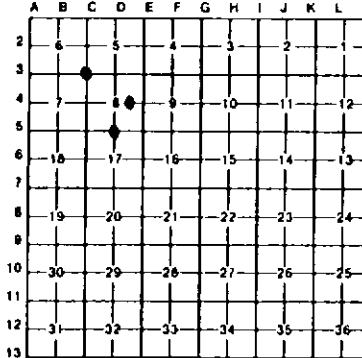
1. Public Land Survey	T 48N R 33W	C3
	T 48N R 33W	D5
	T R	
	T R	
2. Property Controlling in Section	S 8 T 48N R 33W	9
	S T R	
3. Miscellaneous Property in Sec	S T R	
	S T R	

Register of Deeds Stamp & File Number

4. Lot No. _____, Recorded Plat _____
5. Private Claims _____

I, Stephen J. Szyszkoski, in a field survey on August 26, 1993, 19____ do hereby certify that under requirements of P.A. 74, Michigan P.A. of 1970, the corner points mentioned in lines 1 and 2 above were in conformance with regulations and rules therefore as required in the current manual of survey instructions of the United States Department of the Interior, Bureau of Land Management or by a decree of a Court of Law and/or that the corner points mentioned in lines 3, 4 and 5 above were in conformance with the rules of the Michigan Board of Land Surveyors or by a Decree of a Court of Law; established, re-established, monumented, re-monumented, recovered, found as expressed below.

NOTE: Not more than 4 corners, all in the same town and range, may be recorded on this certificate.



A. Description of original monument and accessories and/or subsequent restoration:

- (C3) Section corner common to Sections 5-6-7-8. Original corner established in 1852 by U.S. Deputy Surveyor Francis S. Houck. BTs: Sugar 16 N18E 36 links, Cedar 20 S74W 6 links.
- (D5) Quarter corner common to sections 8-17. Original corner established in 1852 by U.S. Deputy Surveyor Francis S. Houck. BTs: Sugar 6 N68W 27 links, Maple 8 S32E 15 links. Found no subsequent record.
- (9-Sec. 8) East 1/16 corner, section 8. Corner not established in the original survey. Found no subsequent record.

B. Description of corner evidence found and/or method applied in restoring or reestablishing corner:

- (C3) Original post and accessories not recovered. Found no acceptable evidence of the position of the original corner. Reestablished the corner by double proportionate measurement to the original record between monumented corners 5052.74' north (5058.9 U.S.), 2645.77' east (2645.9 U.S.), 10551.28' south (10560 U.S.), and 4982.69' west (4983.0 U.S.). This position checks very well with original line call to south "12.00 enter swamp CE+W)", found to be 12.0 chains. At the position for the corner, I placed a 1"x32" iron pipe capped with a 4" dia. cast aluminum MDNR tablet. From the corner monumented, I found a 1 1/2" iron pipe and a squared post, placed by unknown persons, N10W, 135'. The pipe appears to have been in place for many years.
- (D5) Original post and accessories not recovered. Found no acceptable evidence of the position of the original corner. Reestablished the corner by single proportionate measurement to the original record between monumented section corners 2642.71' east and west. At the position for the corner, I placed a 1"x32" iron pipe capped with a 4" dia. cast aluminum MDNR tablet. From the corner, a concrete spillway on the southerly end of a dike at the west end of a man-made lake is 170' west and 190' south.
- (9-Sec. 8) Found no evidence of prior monumentation at corner position. Established the corner midway and on a straight line between Center of Section and Quarter corner common to sections 8-9, being 1320.14' west and east. At the position for the corner, I placed a 1"x32" iron pipe capped with a 4" dia. cast aluminum MDNR tablet.

C. Description of monument for corner and accessories established to perpetuate locating the position of the corner:

- | | | |
|---|--|---|
| (C3) Set a 1" pipe with a 4" MDNR cap. Blazed and scribed the following new bearing trees:
13" Maple N23W 40.6' "S6 NBT"
10" Maple N25E 12.8' "S5 NBT"
8" Sugar S20E 26.0' "S8 NBT"
9" Maple S60W 35.7' "S7 NBT"
N37W 8.9' Apex on west side of a 3'x2' boulder projecting 1 ft.
Placed a 4" squared sugar post adjacent. | (D5) Set a 1" pipe with a 4" MDNR cap. Blazed and scribed the following new bearing trees:
5" Balsam N04E 34.6' "1/4S NBT"
8" Tamarack N66W 27.7' "1/4S NBT"
18" Tamarack N18E 38.9' "1/4S NBT"
24" Tamarack S87E 31.7' "1/4S NBT"
Placed a 4" ironwood post 1 ft. north of the corner. | (9) Set a 1" pipe with a 4" MDNR cap. Blazed and scribed the following bearing trees:
8" Sugar N15E 8.9' "1/16S BT"
6" Sugar N65E 21.1' "1/16S BT"
8" Sugar S20E 13.3' "1/16S BT"
5" Balsam S28W 5.4' "1/16S BT"
Squared a 10" sugar which bears N22E, 2.2' from the corner. |
|---|--|---|

Signed by Stephen J. Szyszkoski
Surveyor's Michigan License No. 33986



9-1-93