

46.

LAND CORNER RECORDATION CERTIFICATE
Filing Requirement of Act 74, Mich. P.A. 1970

For corners in

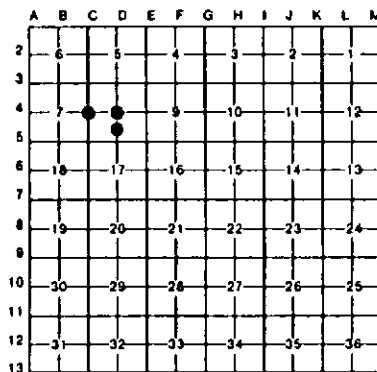
Baraga (County)	Located In:	Corner Code ##
1. Public Land Survey	T 48N R 33W	04
	T 48N R 33W	04
	T R	
	T R	
2. Property Controlling in Section	S B T 48N R 33W	12
	S T R	
3. Miscellaneous Property in Sec.	S T R	
	S T R	

Register of Deeds Stamp & File Number

4. Lot No. _____, Recorded Plat _____
5. Private Claims _____

I, Stephan J. Szyszkoski, in a field survey on August 26, 1993, 19_____, do hereby certify that under requirements of P.A. 74, Michigan P.A. of 1970, the corner points mentioned in lines 1 and 2 above were in conformance with regulations and rules therefore as required in the current manual of survey instructions of the United States Department of the Interior, Bureau of Land Management or by a decree of a Court of Law and/or that the corner points mentioned in lines 3, 4 and 5 above were in conformance with the rules of the Michigan Board of Land Surveyors or by a Decree of a Court of Law, established, re-established, monumented, re-monumented, recovered, found as expressed below.

NOTE: Not more than 4 corners, all in the same town and range, may be recorded on this certificate.



A. Description of original monument and accessories and/or subsequent restoration:

- (C4) Quarter corner common to Sections 7-8. Corner established in 1852 by U.S. Deputy Surveyor Francis S. Houck. Original BTs: Y. Birch 20 N49E 35 links, Sugar 6 S53W 32 links. Original line notes show "Top of ridge and ledge 50 C E+W", south 12.00 ch. and "Intersect stream 15 CNW+leave swamp CNW", north 17.7 ch.
- (D4) Center of Section 8. Corner not established in the original survey. Found no subsequent record.
- (12-Sec. 8) South 1/16 corner, Section 8. Corner not established in the original survey. Found no subsequent record.

B. Description of corner evidence found and/or method applied in restoring or reestablishing corner:

- (C4) Original post and accessories not recovered. Found no evidence of prior monumentation at the corner position. Found no acceptable evidence of the location of the original corner. Reestablished the corner by single proportionate measurement to the original record between reestablished corners 2637.82' north and south. At the position for the corner, I placed a 1"x32" iron pipe capped with a 4" dia. cast aluminum MDNR tablet. From the corner monumented, the line call to "top of ridge and ledge 50 C E+W" checks very well. Stream crossing call to north measures 0.5 ch. longer than record but stream channel appears unstable and it's location has likely changed several times.
- (D4) Found no evidence of prior monumentation. Established the corner at the intersection of straight lines connecting opposite 1/4 corners, all monumented. At the position for the corner, I placed a 1"x32" iron pipe capped with a 4" dia. cast aluminum MDNR tablet. From the corner, a wood post, being a forester's approximate corner, bears southwest, approximately 3 ft.
- (12-Sec. 8) Found no monumentation at the corner position. Established the corner midway and on a straight line between Quarter corner to south and center of section 8, both monumented corners. At the position for the corner, I placed a 1"x32" iron pipe capped with a 4" dia. cast aluminum MDNR tablet.

C. Description of monument for corner and accessories established to perpetuate locating the position of the corner:

- | | | |
|---|---|--|
| (C4) Set 1" pipe with 4" MDNR cap. Blazed and scribed the following new bearing trees:
5" Maple S43E 10.6' "1/4S NBT"
10" Maple S08W 18.7' "1/4S NBT"
8" Maple N38W 23.2' "1/4S NBT"
7" Twin Maple N59E 18.6' "1/4S NBT"
Placed a 4" squared maple post 1 ft. north of the corner. | (D4) Set a 1" pipe with a 4" MDNR cap. Blazed and scribed the following bearing trees:
12" Sugar S56W 6.0' "1/4S BT"
8" Sugar N23W 6.2' "1/4S BT"
6" Sugar N30E 13.1' "1/4S BT"
10" Sugar S63E 25.8' "1/4S BT"
Placed a 3" squared cedar post 1 ft. north of the corner. | (12) Set 1" pipe with 4" MDNR cap. Blazed and scribed the following bearing trees:
9" Maple S70W 15.7' "1/16S BT"
14" Maple N21W 8.5' "1/16S BT"
5" Balsam N54E 42.5' "1/16S BT"
8" Maple S74E 8.5' "1/16S BT"
Placed a 4" squared ironwood post 1 ft. south of the corner. |
|---|---|--|

Signed by Stephan J. Szyszkoski
Surveyor's Michigan License No. 33986



9-1-93