

LAND CORNER RECORDATION CERTIFICATE
Filing Requirement of Act 74, Mich. P.A. 1970

For corners in
Baraga

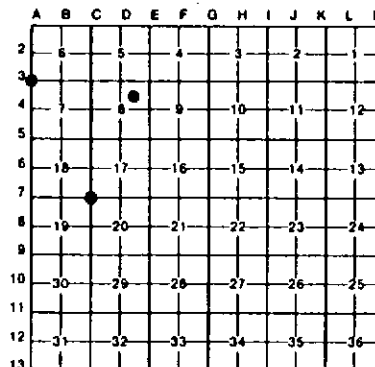
(County)	Located In:	Corner Code #
1. Public Land Survey	T 48N R 33W	A3
	T 48N R 33W	C7
	T _____ R _____	_____
2. Property Controlling in Section	S 8 T 48N R 33W	6
	S _____ T _____ R _____	_____
	S _____ T _____ R _____	_____
3. Miscellaneous Property in Sec.	S _____ T _____ R _____	_____
	S _____ T _____ R _____	_____
	S _____ T _____ R _____	_____

Register of Deeds Stamp & File Number

4. Lot No. _____, Recorded Plat _____
 5. Private Claims _____

I, Stephan J. Szyszkoski, in a field survey on August 26, 1993, 19_____, do hereby certify that under requirements of P.A. 74, Michigan P.A. of 1970, the corner points mentioned in lines 1 and 2 above were in conformance with regulations and rules therefore as required in the current manual of survey instructions of the United States Department of the Interior, Bureau of Land Management or by a decree of a Court of Law and/or that the corner points mentioned in lines 3, 4 and 5 above were in conformance with the rules of the Michigan Board of Land Surveyors or by a Decree of a Court of Law, established, re-established, monumented, re-monumented, recovered, found as expressed below

NOTE: Not more than 4 corners, all in the same town and range, may be recorded on this certificate.



A. Description of original monument and accessories and/or subsequent restoration.

(A3) Section corner common to Sections 6-7 T48N-R33W, and 1-12 T48N-R34W. Original corner established in 1846 by U.S. Deputy Surveyor Austin Burt. Bts: Y. Birch 14 S75 1/2E 24, Hemlock 16 N15 1/2W 9. Subsequent Bts marked during township subdivision: Maple 12 S56W 23, Y. Birch 8 N84 1/2E 31. Original notes state "stream 15 CM" south 27.55 ch. Found no subsequent record.
 (C7) Section corner common to Sections 17-18-19-20. Original corner established in 1852 by U.S. Deputy Surveyor Francis S. Houck. Bts: Fir 6 N70E 16, Fir 6 S68W 5. Original notes show line calls: 1) north 3.5 leave swamp CNW; 2) north 15.5 ch. to "top of ridge and ledge 50 C ESE, 3) west 6.04 "intersect sluggish stream CNW", 4) south 7.81 "brook 6 C West". Found no subsequent record.
 (6-Sec. 8) Northeast 1/16 corner, Section 8. Corner not established in the original survey. Found no subsequent record.

B. Description of corner evidence found and/or method applied in restoring or reestablishing corner:

(A3) Original post and accessories not recovered. Found a 1 1/2" iron pipe, projecting 18" with an old squared post adjacent which checks reasonably with the original record for distances to corners south and east. The line call south to stream checks perfectly with the record, although 2 additional stream channels were observed between 27.5 and 28.5 ch south of the corner. An old Celotex location poster on a fallen cedar faces the pipe, as well as several very old blazes. Accepted the pipe as the best available evidence of the position of the original corner.
 (C7) Original post and accessories not recovered. Found an old squared cedar post with several old blazes and a signature tree dating to 1949 facing it. Verified the position of the post with respect to the original record as referenced above: 1) checks to well defined edge; 2) checks very well; 3) 6.5 ch. meas. Course N35E; 4) checks very well. Distance north two miles to a recorded corner checks very well with the record. Distance east 1 mile to a recorded corner is about 20 ft. longer than record. I accepted the post as the best available evidence of the position of the original corner and replaced it with a 1"x32" iron pipe capped with a 4" dia. cast aluminum MDNR tablet. Corner falls in a cedar swamp 600' south of the centerline of old M-28.
 (6-Sec. 8) Found no evidence of prior monumentation. Established the corner at the intersection of straight lines connecting opposite 1/16 corners, all monumented. At the position for the corner, I placed a 1"x32" iron pipe capped with a 4" dia. cast aluminum MDNR tablet.

Table Description of monument for corner and accessories established to perpetuate locating the position of the corner:		
(A3) Found a 1 1/2" iron pipe	(C7) Set a 1" pipe with a 4" MDNR cap.	(6) Set a 1" pipe with a 4" MDNR cap.
Blazed and scribed the following new bearing trees:	Blazed and scribed the following new bearing trees:	Blazed and scribed the following bearing trees:
5" Spruce N39E 4.9' "S6 NBT"	8" Cedar N35E 7.0' "S17 NBT"	5" Sugar N70E 12.2' "1/16S BT"
11" Hemlock S20E 19.6' "S7 NBT"	5" Cedar S85E 5.7' "S20 NBT"	7" Sugar S09E 22.6' "1/16S BT"
8" Hemlock S28W 19.3' "S12 NBT"	9" Cedar N60W 22.6' "S18 NBT"	10" Sugar S61W 42.9' "1/16S BT"
12" Y. Birch N81W 20.4' "S1 NBT"	10" Cedar S44N 13.3' "S19 NBT"	14" Sugar N42W 46.9' "1/16S BT"
	11" Cedar signature tree N40N 23.5'	Placed a 4" Squared Maple post 1 ft. north of the corner.
	7" Cedar with old blaze S11W 10.6'	
	Set 3" squared cedar post adjacent	



Signed by _____ Date 9-1-93