

43.

**LAND CORNER RECORDATION CERTIFICATE**  
**Filing Requirement of Act 74, Mich. P.A. 1970**

For corners in  
Baraga

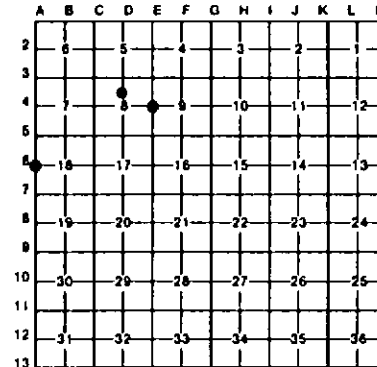
	(County)	Located In:	Corner Code #
1. Public Land Survey		T 48N R 33W	A6
		T 48N R 33W	E4
		T R	
		T R	
2. Property Controlling in Section	S 8	T 48N R 33W	5
	S	T R	
3. Miscellaneous Property in Sec.	S	T R	
	S	T R	

Register of Deeds Stamp & File Number

4. Lot No. \_\_\_\_\_, Recorded Plat \_\_\_\_\_  
 5. Private Claims \_\_\_\_\_

I, Stephan J. Szyszkoski, in a field survey on August 26, 1993, 19\_\_\_\_\_, do hereby certify that under requirements of P.A. 74, Michigan P.A. of 1970, the corner points mentioned in lines 1 and 2 above were in conformance with regulations and rules therefore as required in the current manual of survey instructions of the United States Department of the Interior, Bureau of Land Management or by a decree of a Court of Law and/or that the corner points mentioned in lines 3, 4 and 5 above were in conformance with the rules of the Michigan Board of Land Surveyors or by a Decree of a Court of Law, established, re-established, monumented, re-monumented, recovered, found as expressed below.

**NOTE: Not more than 4 corners, all in the same town and range, may be recorded on this certificate.**



A. Description of original monument and accessories and/or subsequent restoration:

- (A6) Quarter corner common to Section 18 T48N-R33W and 13 T48N-R34W. Original corner established in 1846 by U.S. Deputy Surveyor Austin Burt. BTs: Y. Birch 12 S28 1/2 E 13, Y. Birch 12 N16 1/2W 12. Corner monument shown as being existant on a May 3, 1952 map of survey of part of SW1/4 Sec. 18 by H.T. Thompson, R.L.S. #4348. Corner is shown in old E-W road as being 2622.00' north of 1/2" sq. iron pin at the southwest corner of Sec. 18. The type of monument is not noted.
- (E4) Quarter corner common to sections 8-9. Corner previously recorded by Kieth L. Sackett, R.L.S. 19006 in 1975, monumented and witnessed as follows: Set 1" I.D. x 36" iron pipe with 4" aluminum cap. NBTs: 8" Sugar N17E 12.0' 1/4S, NBT; 8" Sugar S08E 8.3' 1/4S, NBT; 4" Sugar N58W 5.6' tree squared.
- (5-Sec. 8) North 1/16 corner, section 8. Corner not established in the original survey. Found no subsequent record.

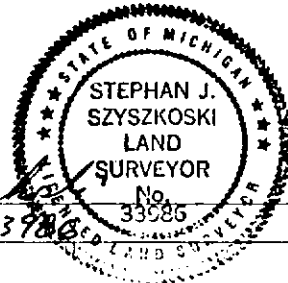
B. Description of corner evidence found and/or method applied in restoring or reestablishing corner:

- (A6) Original post and accessories not recovered. Found an old 1 1/2" sq. x approx. 7" drag tooth set vertically 3 ft. north of the center of an old road bed. A very old blaze on a 32" sugar N43E 20ft. faces it and a blue paint line extends to the north. A Champion location poster lies disturbed on the ground several feet from the corner. Distance south to the square pin measures 2618.60'. Distance north to Section corner 6-7-1-12 is reasonable and the drag tooth is only 3 ft. east of a straight line between them. I accept the drag tooth as the monument noted on the Thompson survey and as the best available evidence of the position of the original corner. Removed the drag tooth and placed, in its position, a 1"x24" iron pipe capped with a yellow plastic cap stamped "Mich DNR LS 33986" set flush with the road in a small mound of stone.
- (E4) Found and accepted the 1975 monument as described and in substantial accord with the record NBTs as found: 10" Maple N20E 12.1' blazed and scribed as noted, 8" Sugar S05E 8.3' blazed and scribed as noted. The squared tree is gone. Marked two additional witness trees as described below.
- (5-Sec. 8) Found no evidence of prior monumentation. Established the corner midway and on a straight line between quarter corner 1317.84' north and center of section 1317.84' south. At the position for the corner, I placed a 1"x32" iron pipe capped with a 4" dia. cast aluminum MDNR tablet.

C. Description of monument for corner and accessories established to perpetuate locating the position of the corner:

- |  |  |   |
|--|--|---|
| (A6) Set a 1" pipe with plastic cap. Blazed and scribed the following new bearing trees: | (E4) Found 1" pipe with a 4" MDNR cap. Blazed and scribed the following new bearing trees: | (5) Set a 1" pipe with a 4" MDNR cap. Blazed and scribed the following bearing trees: |
| 8" Sugar N52E 41.3' "1/4S NBT"   | 4" Sugar N31W 19.5' "1/4S NBT"   | 6" Sugar S71W 19.4' "1/16S BT"  |
| 8" Sugar S15E 22.0' "1/4S NBT"   | 8" Sugar S32N 31.9' "1/4S NBT"   | 10" Sugar N67W 29.1' "1/16S BT"   |
| 8" Sugar S42W 29.4' "1/4S NBT"   |  | 12" Sugar N26E 28.8' "1/16S BT"   |
| 11" Y. Birch N42W 18.4' "1/4S NBT"   |  | 5" Sugar S62E 30.5' "1/16S BT"  |
| Placed a squared post with location poster adjacent.                                     |  |   |

Signed by Stephan J. Szyszkoski  
 Surveyor's Michigan License No. 33986



Date 9-1-93