

LAND CORNER RECORDATION CERTIFICATE
Filing Requirement of Act 74, Mich. P.A. 1970

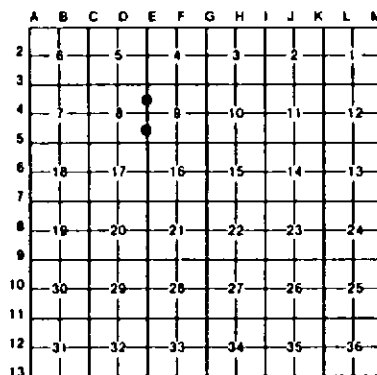
For corners in
Baraga

(County)	Located in:	Corner Code -#
1. Public Land Survey	T _____ R _____	_____
	T _____ R _____	_____
	T _____ R _____	_____
	T _____ R _____	_____
2. Property Controlling in Section	S <u>8</u> T <u>48N</u> R <u>33W</u>	<u>14</u>
	S <u>8</u> T <u>48N</u> R <u>33W</u>	<u>7</u>
3. Miscellaneous Property in Sec.	S _____ T _____ R _____	_____
	S _____ T _____ R _____	_____
4. Lot No. _____, Recorded Plat _____		
5. Private Claims _____		

Register of Deeds Stamp & File Number

I, Stephan J. Szyszkoski, in a field survey on August 26, 1993, 19 _____, do hereby certify that under requirements of P.A. 74, Michigan P.A. of 1970, the corner points mentioned in lines 1 and 2 above were in conformance with regulations and rules therefore as required in the current manual of survey instructions of the United States Department of the Interior, Bureau of Land Management or by a decree of a Court of Law and/or that the corner points mentioned in lines 3, 4 and 5 above were in conformance with the rules of the Michigan Board of Land Surveyors or by a Decree of a Court of Law, established, re-established, monumented, re-monumented, recovered, found as expressed below:

NOTE: Not more than 4 corners, all in the same town and range, may be recorded on this certificate.



A. Description of original monument and accessories and/or subsequent restoration:

(14-Sec. 8) South 1/16 corner between sections 8-9. Corner not established in the original survey. Found no subsequent record.
(7-Sec. 8) Corner previously established and recorded in Baraga County records by Michigan Department of Natural Resources surveyors in 1975 midway and on a straight line between Section corner to north and Quarter corner to south.

B. Description of corner evidence found and/or method applied in restoring or reestablishing corner:

(14-Sec. 8) Found no evidence of prior monumentation at corner location. Established the corner midway and on a straight line between the quarter corner 1323.02' north and section corner 1323.02' south. At the position for the corner, placed a 1"x32" iron pipe capped with a 4" dia. cast aluminum MDNR tablet. An east-west fence is approx. 10' south of the corner.
(7-Sec. 8) Found MDNR monument and accessories as recorded. Determined that the monument does not occupy the position intended in 1975. Specifically, the monument was placed 6.64' south and 0.64' west of the corner. Removed the 1975 monument and placed a 1"x32" iron pipe capped with a 4" dia. cast aluminum MDNR tablet midway and on a straight line between monumented section and quarter corners 1297.71' north and south. Remeasured to the 1975 witness trees and marked two new bearing trees as described below.

C. Description of monument for corner and accessories established to perpetuate locating the position of the corner:

(14) Set a 1" pipe with a 4" MDNR cap. Blazed and scribed the following bearing trees: 4" Spruce N05E 43.2' "1/16S BT" 6" Spruce N86E 19.7' "1/16S BT" 7" Tamarack S69E 26.7' "1/16S BT" 12" Tamarack S17W 34.9' "1/16S BT" Placed a squared 3" ash post 1 ft. north of the corner.	(7) Set a 1" pipe with a 4" MDNR cap. 24" Sugar N56E 6.0' "1/16S BT" 22" Sugar S05W 11.6' "1/16S BT" Blazed and scribed the following new bearing trees: 12" Sugar N75W 15.5' "1/16S BT" 8" Sugar S38W 23.8' "1/16S BT" a 2" squared maple post is 1 ft. north of the corner.
---	---



Signed by Stephan J. Szyszkoski Date 9-1-93
Surveyor's Michigan License No. 33986