

LAND CORNER RECORDATION CERTIFICATE
Filing Requirement of Act 74, Mich. P.A. 1970

For corners in

<u>Baraga</u>	Located In:	Corner Code #
(County)		
1. Public Land Survey	T <u>48N</u> R <u>33W</u>	<u>D11</u>
	T _____ R _____	_____
	T _____ R _____	_____
	T _____ R _____	_____
2. Property Controlling in Section	S <u>29</u> T <u>48N</u> R <u>33W</u>	<u>15</u>
	S _____ T _____ R _____	_____
3. Miscellaneous Property in Sec.	S _____ T _____ R _____	_____
	S _____ T _____ R _____	_____

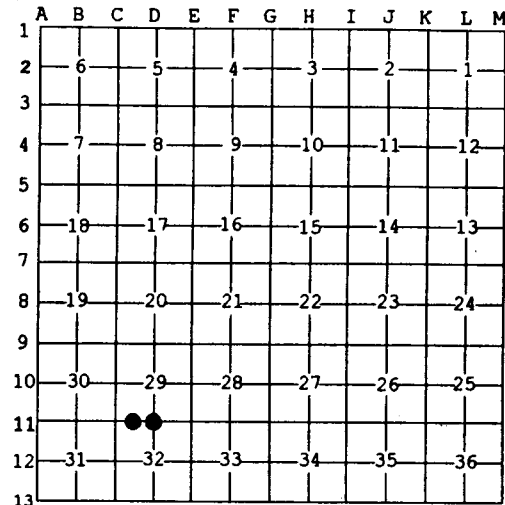
Register of Deeds Stamp & File Number

4. Lot No. _____, Recorded Plat _____
 5. Private Claims _____

Feb 12 2002

I, Stephan J. Szyszkoski, in a field survey on _____, 20____ do hereby state that under requirements of P.A. 74, Michigan P.A. of 1970, the corner points mentioned in lines 1 and 2 above were in conformance with regulations and rules therefore as required in the current manual of survey instructions of the United States Department of the Interior, Bureau of Land Management or by a decree of a Court of Law and /or that the corner points mentioned in lines 3, 4 and 5 above were in conformance with the rules of the Michigan Board of Land Surveyors or by a Decree of a Court of Law; established, re-established, monumented, recovered, found as expressed below:

NOTE: Not more than 2 corners, all in the same town and range, may be recorded on this certificate.



A. Description of original monument and accessories and/or subsequent restoration:

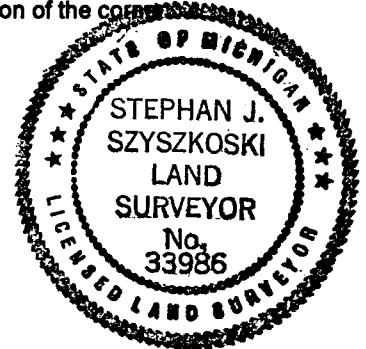
(D11) Quarter corner common to Sections 29 and 32. Reestablished in 1987 by K.L.Sackett, RLS. Restored midway on line, Set 1"IDx36" iron pipe with plastic cap. 12" W.Pine S78W 33.5', 14" Cedar S47E 46.0', 5" Spruce N72E 21.8'.
 (15-Sec. 29) West 1/16 corner between Sections 29 and 32. Established in 1987 by K.L.Sackett RLS midway and on line between Section and 1/4 corners. 1" I.D.x36" pipe set in pile of rocks. 6" Cedar S64E 17.6', 6" Cedar N78E 31.7', 14" W.Pine S78E 21.8'.

B. Description of corner evidence found and/or method applied in restoring or reestablishing corner:

(D11) Recovered the 1987 monument at record bearing and distance from the 1987 accessories. This monument does not occupy the intended position due to a 1987 error in calculation. I removed the 1987 monument and placed a new monument midway and on a line of mean true bearing between Section corners 2645.94' east and west.
 (15-Sec. 29) Recovered the 1987 monument at record bearing and distance from the 1987 accessories. This monument does not occupy the intended position due to a 1987 error in calculation. I removed the 1987 monument and placed a new monument midway and on a line of mean true bearing between Section corner 1322.97' west and Quarter corner 1322.97' east.

C. Description of monument for corner and accessories established to perpetuate locating the position of the corner:

(D11) Set 1"IDx32" I.pipe with 4" alum. MDNR cap. Blazed and scribed: 5" Maple S61W 14.4' "1/4S N8T" 10" Maple N70W 24.0' do the 1987 wits remeasured: 5" Spruce N70E 20.0' do 16" Cedar S42E 42.5' do Set sq'd cedar post adjacent. Bearings are magnetic. Distances to notch in lower blaze.	(15) Set 1"IDx32" I.pipe with 4" alum. MDNR cap. Blazed and scribed: 17" W.Pine N76E 37.2' "1/16S 8T" 6" B.Spruce N26W 25.7' do the 1987 wits remeasured: 5" Cedar S63E 12.7' do 16" W.Pine West 25.2' do Squared a 2" B.Spruce N7E 3.7' to center. Bearings are magnetic. Distances are to notch in lower blaze.
--	---



Signed by Stephan J. Szyszkoski Date 4/18/02
 Surveyor's Michigan License No. 33986