

**LAND CORNER RECORDATION CERTIFICATE**  
**Filing Requirement of Act 74, Mich. P.A. 1970 as Amended**

For corners in

Baraga <small>(County)</small>	Located In:	Corner Code #
1. Public Land Survey	T 48N R 34W	13
	T _____ R _____	_____
	T _____ R _____	_____
2. Property Controlling in Section	S _____ T _____ R _____	_____
	S 2 T 48N R 34W	9
	S _____ T _____ R _____	_____
3. Miscellaneous Property in Sec.	S _____ T _____ R _____	_____
	S _____ T _____ R _____	_____

4. Lot No. \_\_\_\_\_, Recorded Plat \_\_\_\_\_  
 5. Private Claims

9 Jun 29 2004  
 13 Jul 19 2004

I, Stephan J. Szyszkoski, in a field survey on \_\_\_\_\_, 20\_\_\_\_ do hereby state that under requirements of P.A. 74, Michigan P.A. of 1970, the corner points mentioned in lines 1 and 2 above were in conformance with regulations and rules therefore, as required in the current manual of survey instructions of the United States Department of the Interior, Bureau of Land Management or by a decree of a Court of Law and /or that the corner points mentioned in lines 3, 4 and 5 above were in conformance with the rules of the Michigan Board of Land Surveyors or by a Decree of a Court of Law; established, re-established, monumented, recovered, found as expressed below:

**NOTE: Not more than 2 corners, all in the same town and range, may be recorded on this certificate.**

**A. Description of original monument and accessories and/or subsequent restoration:**

(13) Corner common to Sections 2-3-10-11. 1853: Established by Francis Colman: [south] Corrected between Sections 2&3...78.51 set post cor of Secs. 2-3-10-11. Aspen 6 N76W 10 links, B.Ash 10 S53E 20 links. 1853 chainages are reported as follows: To E3 160.68, to I5 80.00, to K3 80.17.  
 (9-Sec. 2) East 1/16 corner, Section 2. Not established in the original survey.

**B. Description of corner evidence found and/or method applied in restoring or reestablishing corner:**

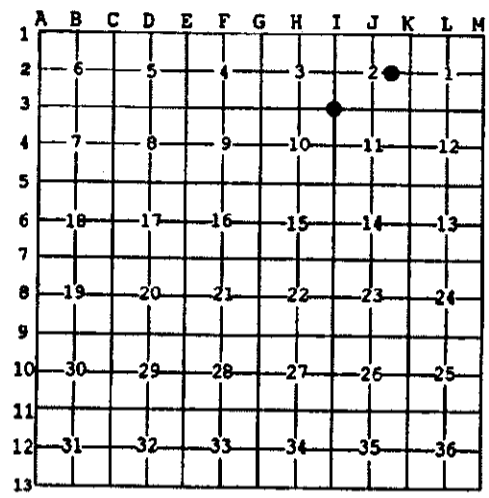
(13) The original post and accessories were not recovered. The corner had been destroyed by road construction. Reestablished the corner at the intersection of the extension of the centerlines of roads leading south and east. From the position thus established, the record chainages noted above measure as follows: 77.92 to I1, 160.12 to N-S road C/L at E3 (no monument found), 79.77 to road C/L intersection at I5 (no monument found), and 79.98 to reestablished K3.  
 (9-Sec. 2) Established the corner midway and on a straight line between Center of Section 1322.12' west and Quarter corner 1322.12' east.

**C. Description of monument for corner and accessories established to perpetuate locating the position of the corner:**

(13) Set 1 10x32" I. pipe with 4" alum. MDNR cap, buried 5". Blazed, scribed, and set measuring nails in:	(9) Set 1 10x32" I. pipe with 4" alum. MDNR cap. Blazed, scribed, and set measuring nails in:
12" Spruce S78W 24.0' "S10 NBT"	9" Cedar N43E 26.1' "1/16S BT"
5" Maple S37W 45.0' do	9" Maple S32E 5.2' do
5" Cedar S32E 94.8' "S11 NBT"	6" Spruce S42W 15.4' do
4" B.Ash S51E 69.7' do	20" W.Pine N58W 16.8' do

Bearings are magnetic. Distances are to nail with tag. Set sq'd cedar post adjacent. Bearings are magnetic. Distances are to nail with tag.

Register of Deeds Stamp & File Number



Signed by Stephan J. Szyszkoski  
 Surveyor's Michigan License No. 33986

Date 8/30/04

For the Michigan Department of Natural Resources, Office of Land and Facilities