

**LAND CORNER RECORDATION CERTIFICATE**  
**Filing Requirement of Act 74, Mich. P.A. 1970**

For corners in  
 Baraga

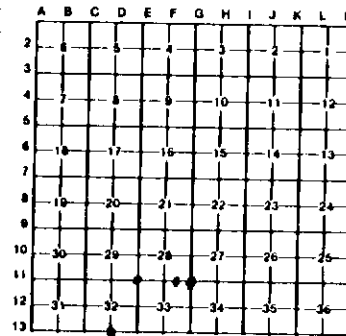
County	Located In	Corner Code -#
1. Public Land Survey	T 49N R32W	E11
	T R	D13
	T R	B11
	T R	
2. Property Controlling in Section	S 33 T R	2
	S T R	
3. Miscellaneous Property in Sec	S T R	
	S T R	

Register of Deeds Stamp & File Number

4. Lot No \_\_\_\_\_, Recorded Plat \_\_\_\_\_  
 5. Private Claims \_\_\_\_\_

I, Keith Sartelt, in a field survey on October 13, 19 88, do hereby certify that under requirements of P.A. 74, Michigan P.A. of 1970, the corner points mentioned in lines 1 and 2 above were in conformance with regulations and rules therefore as required in the current manual of survey instructions of the United States Department of the Interior, Bureau of Land Management or by a decree of a Court of Law and/or that the corner points mentioned in lines 3, 4 and 5 above were in conformance with the rules of the Michigan Board of Land Surveyors or by a Decree of a Court of Law, established, re-established, monumented, re-monumented, recovered, found as expressed below.

**NOTE: Not more than 4 corners, all in the same town and range, may be recorded on this certificate.**



**A. Description of original monument and accessories and/or subsequent restoration:**

E11	D13	B11	2
Original monument and accessories not found. Found 4" squared post, signature tree and location poster.	Original monument and accessories not found.	Original monument and accessories not found. Found old squared scribed post set by Nora Thompson.	Not set on original survey. Found old post scribed E 1/8.

**B. Description of corner evidence found and/or method applied in restoring or reestablishing corner:**

E11	D13	B11	2
Restored at old post. Fits good with land calls and has been used for many years.	Corner position falls in Sturgeon River. The river has changed course in this area.	Restored at post.	Established midway on line.

**C. Description of monument for corner and accessories established to perpetuate locating the position of the corner.**

E11	D13	B11	2
Set 1"x36" I.P. w/4" aluminum cap. 4" sugar N17E 9.8' S28 NBT 6" sugar N25W 15.7' S29 NBT 4" sugar S36W 16.0' S32 NBT	Set 1"x32" I.P. w/4" aluminum cap. 36.5 ft. north of corner on N-S 1/4 line. B" balsam S85W 19.8' MC, BT 5" balsam N02W 17.3' MC, BT 7" balsam N31E 14.0' MC, BT	Set 1" I.D. by 32" I.P. w/4" aluminum cap at old Nora Thompson sq. scribed post. 5" sugar N86E 12.7' S27 NBT 12" sugar S86W 17.1' S33 NBT 10" sugar N52W 30.6' S28 NBT	Set 1"x 36" I.P. w/4" aluminum cap at 4" square post scribed E 1/8. 16" cedar N12W 16.6' 1/16S BT 10" cedar S63W 25.3' 1/16S BT 16" cedar N28E 30.8' 1/16S BT

Signed by Keith Sartelt Date 12-22-88

Surveyor's Michigan License No. 19006