

LAND CORNER RECORDATION CERTIFICATE
Filing Requirement of Act 74, Mich. P.A. 1970

For corners in

Baraga

(County)

Located In:

Corner Code #

1. Public Land Survey

T 49N	R 32W	E6
T 49N	R 32W	F6
T	R	
T	R	

2. Property Controlling in Section

S	T	R	
S	T	R	

3. Miscellaneous Property in Sec.

S	T	R	
S	T	R	

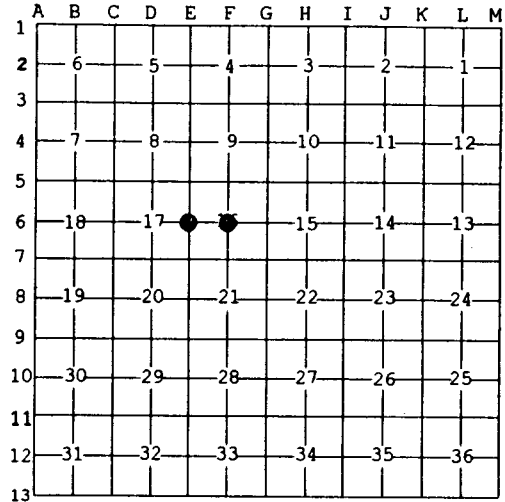
Register of Deeds Stamp & File Number

4. Lot No. _____, Recorded Plat _____
 5. Private Claims _____

Jun 11 2002

I, Stephan J. Szyszkoski, in a field survey on _____, 20__ do hereby state that under requirements of P.A. 74, Michigan P.A. of 1970, the corner points mentioned in lines 1 and 2 above were in conformance with regulations and rules therefore as required in the current manual of survey instructions of the United States Department of the Interior, Bureau of Land Management or by a decree of a Court of Law and/or that the corner points mentioned in lines 3, 4 and 5 above were in conformance with the rules of the Michigan Board of Land Surveyors or by a Decree of a Court of Law; established, re-established, monumented, recovered, found as expressed below:

NOTE: Not more than 2 corners, all in the same town and range, may be recorded on this certificate.



A. Description of original monument and accessories and/or subsequent restoration:

(E6) Quarter corner common to Sections 16 and 17. 1852: Established by Guy H. Carleton: "Corrected between 16 & 17...40.00 Set quarter post. Sugar 8 N31W 20 links, Yellow Birch N22E 25 links". 1944: Norman T. Thompson, RLS states: "at 1/4 cor. set Iron pipe acc. to Highway Eng. B.T. Y. Birch 22 S45W 10.5, Spr 14 N78E 16.5, Mp 22 S26E 29.6'. All measurements made by HW Eng set pipe acc. I scribed the distance in trees." Despite Mr. Thompson's reference to what I presume are "highway engineers", I was not able to find any other record of this corner. I was not able to acquire the plans or maps of the RR which crosses the section line south of this corner.
 (F6) Center of Section 16. Not established in the original survey. Found no subsequent record.

B. Description of corner evidence found and/or method applied in restoring or reestablishing corner:

(E6) The original post and accessories were not recovered. Found a 1 3/8" I.pipe, projecting 18", set firm, at record bearing and distance from the stump remains of all three of the witnesses described in the 1944 Thompson notes. I accept the pipe as the best available evidence of the position of the original corner in spite of its bearing S72W, 62.2 ft. distant from the single proportionate position between section corners. There is no evidence of use at the corner.
 (F6) Established the corner at the intersection of straight lines connecting opposite 1/4 corners. From the position thus established, I found a 1"ID iron pipe, not of record, N42W 15.0' distant, which I did not accept as marking the position of the corner.

C. Description of monument for corner and accessories established to perpetuate locating the position of the corner:

(E6) Found 1 3/8" I.pipe. Blazed and scribed:	(F6) Set 1"IDx32" I.pipe with 4" alum. MDNR cap. Blazed and scribed:
6" Sugar N7E 4.3' "1/4S NBT"	7" Sugar N75E 6.8' "C1/4 BT"
15" Sugar S70E 25.0' do	11" Sugar S24W 27.7' do
9" Sugar S01W 18.8' do	8" Sugar N58W 10.3' do
6" Sugar S83W 22.0' do	7" Sugar N08W 13.7' do
Set squared cedar post adjacent.	Placed a sq'd spruce post adjacent.
Bearings are magnetic. Distances are to notch in lower blaze.	Bearings are magnetic. Distances are to notch in lower blaze.



Signed by Stephan J. Szyszkoski
 Surveyor's Michigan License No. 33986

Date 7/11/02