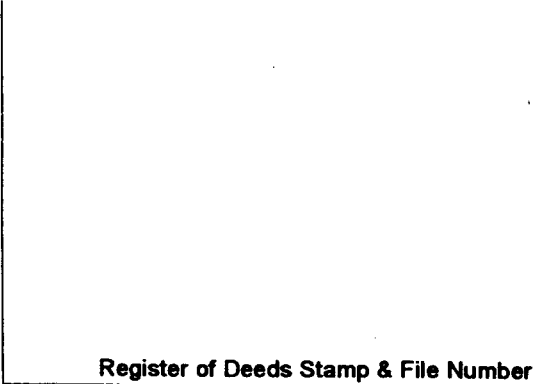


**LAND CORNER RECORDATION CERTIFICATE**  
**Filing Requirement of Act 74, Mich. P.A. 1970**

For corners in

Baraga	Located In:	Corner Code #
(County)		
1. Public Land Survey	T 49N R 32W	15
	T _____ R _____	_____
	T _____ R _____	_____
	T _____ R _____	_____
2. Property Controlling in Section	S 16 T 49N R 32W	15
	S _____ T _____ R _____	_____
3. Miscellaneous Property in Sec.	S _____ T _____ R _____	_____
	S _____ T _____ R _____	_____

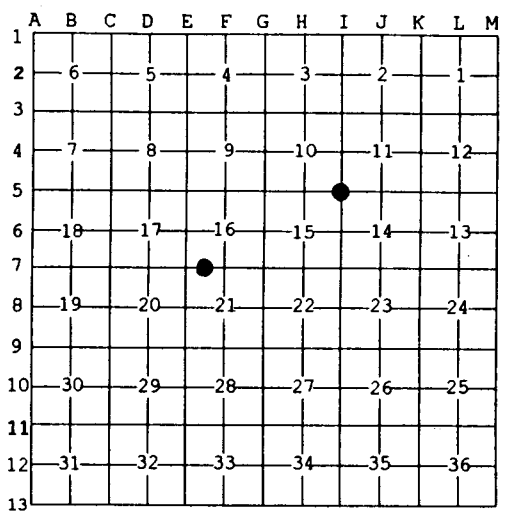


4. Lot No. \_\_\_\_\_, Recorded Plat \_\_\_\_\_  
 5. Private Claims \_\_\_\_\_

15 Jun 18 2002  
 15 Jun 06 2002

I, Stephan J. Szyszkoski, in a field survey on \_\_\_\_\_, 20\_\_ do hereby state that under requirements of P.A. 74, Michigan P.A. of 1970, the corner points mentioned in lines 1 and 2 above were in conformance with regulations and rules therefore as required in the current manual of survey instructions of the United States Department of the Interior, Bureau of Land Management or by a decree of a Court of Law and /or that the corner points mentioned in lines 3, 4 and 5 above were in conformance with the rules of the Michigan Board of Land Surveyors or by a Decree of a Court of Law; established, re-established, monumented, recovered, found as expressed below:

**NOTE: Not more than 2 corners, all in the same town and range, may be recorded on this certificate.**



**A. Description of original monument and accessories and/or subsequent restoration:**  
 (15) Corner common to Sections 10-11-14-15. 1852: Established by Guy H. Carleton: "S22'E corrected between Sections 10 & 11...80.00 Set post corner of Secs. 10-11-14-15. Fir 12 N18W 25 links, Fir 10 S44E 41 links". 1942: N.T.Thompson, RLS states: "No post. Start chaining from center of road. New B.T Spruce 8" tag N8E 30.4', W.Pine 9 N45W 42.3'." 1979: Mead notes state: "Found spruce 8" N8E 30.4' at proper location, tag attached and now 14"...W.Pine 8" N45W 42.3' to notch Now 23.2". Chopped out lower blaze, found scribing. Placed frog on B.Cherry 9.4" S18E 16.0' to C/L, B.Cherry 7.6" N8W 20.3' to C/L. Lane and Ron". 1981: field notes by K.L.Sackett, RLS state: "Set 1" IDx32" IP in log rd. N.Thompson NBT 18" W.Pine N45W 42.3'. 14" W.Pine N48E 37.5', 6" Sugar S11W 22.0' ".  
 (15-Sec. 16) West 1/16 corner, Section 16. Not established in the original survey.

**B. Description of corner evidence found and/or method applied in restoring or reestablishing corner:**  
 (15) Found a 1"ID iron pipe in C/L dirt log road 4" below ground. The 1981 witnesses were found at record bearing and distance in good condition. The 1979 wits were found as follows: 8" Cherry S6E 15.6' to C/L, dead w/frog blaze, 9" Cherry N5W 20.3' to C/L with frog and Celotex L.P. The 1942 NBT W.Pine, now a 2 ft. high 26" dia. stump with scar facing the pipe was found at N41W, 41.8'. Accepted the pipe as the best available evidence of the position of the original corner.  
 (15-Sec. 16) Established the corner midway and on a line of mean true bearing between Section corner 1310.95' west and 1/4 corner 1310.95' east. The corner falls in the westerly edge of a railroad bed in a large treeless wet area.

**C. Description of monument for corner and accessories established to perpetuate locating the position of the corner:**  
 (15) Found 1"ID iron pipe 4" below ground. The 1981 wits:  
 17" W.Pine N53E 37.4' old scribe/blaze  
 7" Maple S16W 22.1' fd scribe "S15 NBT"  
 Blazed and scribed the following:  
 11" W.Pine N30E 32.6' "S11 NBT"  
 8" Sugar S70W 32.5' "S15 NBT"  
 Bearings are magnetic. Distances to notch in lower blaze.  
 (15) Set 1"IDx32" I.pipe with 4" alum. MDNR cap.  
 N13E 3.4' Set PK nail in RR tie  
 N70E 3.8' C/L of W'ly rail  
 S44E 10.79' Set PK nail in RR tie.  
 West 3.5' Sq. cedar with creosote crosspiece from overhead wireline  
 S35W 4.9' top C/L W. end 24" CMP under the tracks. Bearings are magnetic. Distances are horizontal.



Signed by Stephan J. Szyszkoski Date 7/11/02  
 Surveyor's Michigan License No. 33986