

**LAND CORNER RECORDATION CERTIFICATE**  
**Filing Requirement of Act 74, Mich. P.A. 1970**

For corners in

Baraga _____ (County)	Located In:	Corner Code #
1. Public Land Survey	T 49N R 32W	I4
	T _____ R _____	_____
	T _____ R _____	_____
	T _____ R _____	_____
2. Property Controlling in Section	S 16 T 49N R 32W	11
	S _____ T _____ R _____	_____
3. Miscellaneous Property in Sec.	S _____ T _____ R _____	_____
	S _____ T _____ R _____	_____

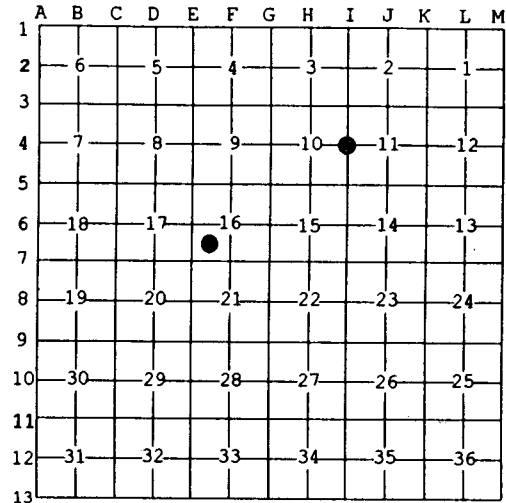
Register of Deeds Stamp & File Number

4. Lot No. \_\_\_\_\_, Recorded Plat \_\_\_\_\_  
 5. Private Claims \_\_\_\_\_

11 Jun 18 2002  
 I4 Jun 06 2002

I, Stephan J. Szyszkoski, in a field survey on \_\_\_\_\_, 20\_\_ do hereby state that under requirements of P.A. 74, Michigan P.A. of 1970, the corner points mentioned in lines 1 and 2 above were in conformance with regulations and rules therefore as required in the current manual of survey instructions of the United States Department of the Interior, Bureau of Land Management or by a decree of a Court of Law and /or that the corner points mentioned in lines 3, 4 and 5 above were in conformance with the rules of the Michigan Board of Land Surveyors or by a Decree of a Court of Law; established, re-established, monumented, recovered, found as expressed below:

**NOTE: Not more than 2 corners, all in the same town and range, may be recorded on this certificate.**



**A. Description of original monument and accessories and/or subsequent restoration:**

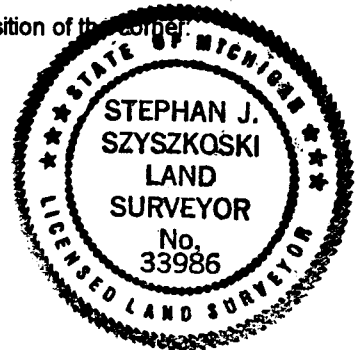
(I4) Quarter corner common to Sections 10-11. 1852: Established by Guy H. Carleton: "40.00 Set quarter post. Spruce 8 N62E 5 links, Cedar 8 N28W 12 links". 1942: N.T.Thompson, RLS states: "Ch. from south...there is no B.T. at 1/4 so set ced post 2640. New B.T. Cedar 6 S35E 29.8', Cedar 12 N18E 24.0'... This line is run pocket compass from the north". 1979: notes from Mead Corp. "Found scribed cedar post in position. NBT Cedar 6" S35E 29.8' to notch at proper location upper and lower blazes visible and now 10.3". Cedar 12" N18E 24.0' to notch (alive and now 14.1") standing at 45 deg. angle, upper and lower blaze showing scribing. Placed 1 1/4" iron pipe in proper position, replaced 4" scribed post beside. Put tag and frog on Spruce 4.4" S10E 7.3' to C/L, frog on Cedar 9.5" N43W 24.8' to C/L. L.Lyberg and J.Flores"  
 (11-Sec. 16) Southwest 1/16 corner, Section 16. Not established in the original survey.

**B. Description of corner evidence found and/or method applied in restoring or reestablishing corner:**

(I4) The original post and accessories were not recovered. Found a 1 1/4" dia. iron pipe at record bearing and distance from N.T.T. Cedar S35E, now 10" dia., no scribing visible, and at substantial record bearing and distance from the 1979 witnesses, both recovered as described, now 7" and 10" DBH, respectively. Found the old squared and scribed post, rotted, adjacent. The monument was recovered 2636.68' north of the section corner, being 2.4' north and 0.2' west of the proportionate position between section corners. I accept same as a careful and faithful reestablishment of the position of the corner.  
 (11-Sec. 16) Established the corner at the intersection of straight lines connecting opposite 1/16 corners.

**C. Description of monument for corner and accessories established to perpetuate locating the position of the corner:**

(I4) Found 1 1/4" dia. iron pipe. Blazed and scribed: 9" Cedar N31E 18.9' "1/4S NBT" 6" Y.Birch S58W 27.1' do 10" Cedar N35W 23.9' do Found: 7" B.Spruce S07E 6.7' to face (marked with upper blaze with frog. Bearings are magnetic. Distances are to notch in lower blaze, unless noted. Set squared cedar post adjacent.	(11) Set 1" IDx32" I.pipe with 4" alum. MDNR cap. Blazed and scribed: 6" B.Spruce N89E 40.2' "1/16S BT" 15" Cedar S6W 17.7' do 6" twin B.Spruce S72W 13.1' do 9" B.Spruce N35W 5.7' do Set squared cedar post adjacent. Bearings are magnetic. Distances are to notch in lower blaze.
--	---



Signed by Stephan J. Szyszkoski  
 Surveyor's Michigan License No. 33986

Date 7/11/02