

LAND CORNER RECORDATION CERTIFICATE
Filing Requirement of Act 74, Mich. P.A. 1970

For corners in

Baraga

(County)

Located In:

Corner Code #

1. Public Land Survey

T 49N	R 32W	K5
T 49N	R 32W	C5
T	R	
T	R	

2. Property Controlling in Section

S	T	R	
S	T	R	

3. Miscellaneous Property in Sec.

S	T	R	
S	T	R	

Register of Deeds Stamp & File Number

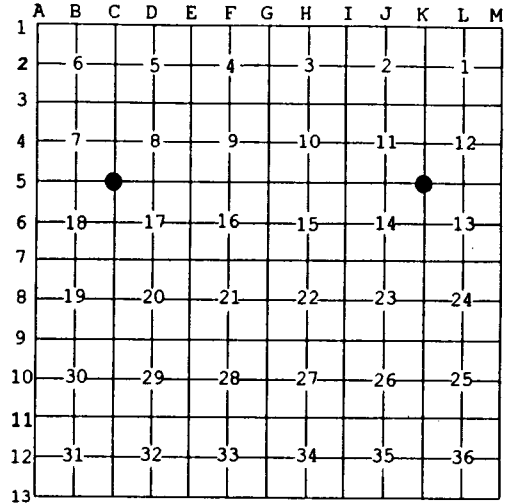
4. Lot No. _____, Recorded Plat _____

5. Private Claims _____

C5 May 23 2002
 K5 Jun 06 2002

I, Stephan J. Szyszkoski, in a field survey on _____, 20__ do hereby state that under requirements of P.A. 74, Michigan P.A. of 1970, the corner points mentioned in lines 1 and 2 above were in conformance with regulations and rules therefore as required in the current manual of survey instructions of the United States Department of the Interior, Bureau of Land Management or by a decree of a Court of Law and /or that the corner points mentioned in lines 3, 4 and 5 above were in conformance with the rules of the Michigan Board of Land Surveyors or by a Decree of a Court of Law; established, re-established, monumented, recovered, found as expressed below:

NOTE: Not more than 2 corners, all in the same town and range, may be recorded on this certificate.



A. Description of original monument and accessories and/or subsequent restoration:

(K5) Corner common to Sections 11-12-13-14. 1852: Established by Guy H. Carleton: "Set post corner of Secs. 11-12-13-14. Spruce 16 N70W 40 links, Maple 24 S50E 39 links". Corner was apparently remonumented or reestablished 1/6/1942 by N.T. Thompson, RLS: "New B.T. Cor of 11-12-13-14 Maple 9 N45W 12.0', Maple 6 S35E 13.9', Cedar 14 S27W 7.8'." Monument type and method are not described. 1981: K.L. Sackett, RLS, in MDNR field book states "Found 1" ID iron pipe set by Norm Thompson RLS. 14" Cedar N24W 42.8' S11,NBT; 18" Cedar N51E 36.9' S12,NBT; 16" Cedar S80E 20.5' S13,NBT. These 1981 wits are not in the county record.

(C5) Corner common to Sections 7-8-17-18. 1852: Established by Guy H. Carleton: "Set post corner of Secs. 7-8-17-18. Sugar 12 N25E 8 links, Y.Birch 20 S72E 20 links".

B. Description of corner evidence found and/or method applied in restoring or reestablishing corner:

(K5) Found a 1 1/4" ID I.pipe set firm in a small rock mound at record bearing and distance from the 1981 witnesses. Only the Cedar NW is in good condition. The Cedar NE is a 3' high stub, and that SE is dead and down. Accepted the pipe as the best available evidence of the position of the original corner.

(C5) The original post was not recovered. Found an old fence corner post hole, with old fencing running north and west, at record bearing and distance (N25E 8 links) to a very old 36" Sugar with overgrown blazes at 8H and at root crown. I believe that this sugar is the OBT noted in the record. A forester's location poster has been nailed to the Sugar and is facing the corner. This position has been accepted by local land owners as evidenced by blue paint lines, cutting lines to east and south and road construction to the east. I monumented the corner in the position of the old fence corner post hole.

C. Description of monument for corner and accessories established to perpetuate locating the position of the corner:

(K5) Found 1 1/4" ID I.pipe. Blazed and scribed:	(C5) Set 1" IDx32" I.pipe with 4" alum. MDNR cap. Blazed and scribed:
15" Y.Birch N67E 30.3' "S12 NBT"	36" Sugar N39E 4.1' (prob. OBT)"S8 NBT"
14" Spruce S72E 15.5' "S13 NBT"	10" Sugar S26W 24.0' "S18 NBT"
5" Sugar S35W 19.2' "S14 NBT"	10" Y.Birch N79W 34.1' "S7 NBT"
12" Cedar N21W 42.7' "S11 NBT" old wit.	12" Y.Birch N49W 33.0' "S7 NBT"
Bearings are magnetic. Distances are to notch in lower blaze.	Placed a squared sugar post adjacent. Bearings are magnetic. Distances are to notch in lower blaze.



Signed by Stephan J. Szyszkoski
 Surveyor's Michigan License No. 33986

Date 7/11/02