

LAND CORNER RECORDATION CERTIFICATE
Filing Requirement of Act 74, Mich. P.A. 1970

For corners in

Baraga

(County)

Located In:

Corner Code #

1. Public Land Survey		T 49N R 32W	G6
		T 49N R 32W	H5
2. Property Controlling in Section	S	T	R
	S	T	R
	S	T	R
	S	T	R
3. Miscellaneous Property in Sec.	S	T	R
	S	T	R

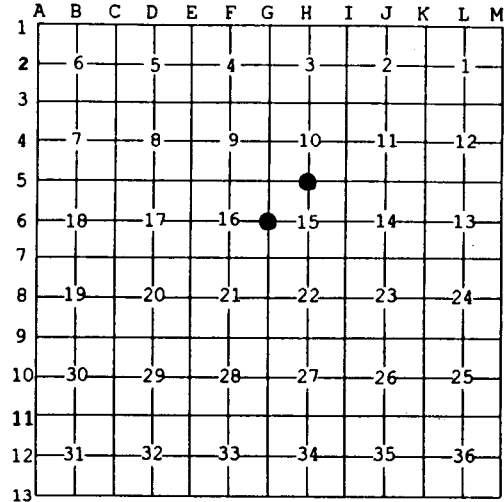
Register of Deeds Stamp & File Number

4. Lot No. _____, Recorded Plat _____
 5. Private Claims _____

Jun 05 2002

I, Stephan J. Szyszkoski, in a field survey on _____, 20__ do hereby state that under requirements of P.A. 74, Michigan P.A. of 1970, the corner points mentioned in lines 1 and 2 above were in conformance with regulations and rules therefore as required in the current manual of survey instructions of the United States Department of the Interior, Bureau of Land Management or by a decree of a Court of Law and /or that the corner points mentioned in lines 3, 4 and 5 above were in conformance with the rules of the Michigan Board of Land Surveyors or by a Decree of a Court of Law; established, re-established, monumented, recovered, found as expressed below:

NOTE: Not more than 2 corners, all in the same town and range, may be recorded on this certificate.



A. Description of original monument and accessories and/or subsequent restoration:

- (G6) Quarter corner common to Sections 15 and 16. 1852: Established by Guy H. Carleton: "40.00 Set Quarter post. Sugar 8 N20W 23 links, Fir 8 S12E 37 links".
- (H5) Quarter corner common to Sections 10 and 15. 1852: Established by Guy H. Carleton: "39.95 Set quarter post. Sugar 12 N32E 33 links, Sugar 14 S34W 35 links".

B. Description of corner evidence found and/or method applied in restoring or reestablishing corner:

- (G6) The original post and accessories were not recovered. Found no evidence of the original corner position on the ground. Reestablished the corner midway and on a line of mean true bearing between section corners 2611.38' north and south.
- (H5) The original post and accessories were not recovered. Found no evidence of the position of the original corner on the ground. Reestablished the corner midway and on a line of mean true bearing between section corners 2596.68' east and west. I note that Guy Carleton seems to have laid out many short miles in this township.

C. Description of monument for corner and accessories established to perpetuate locating the position of the corners:

- | | |
|--|---|
| (G6) Set 1"IDx32" I.pipe with 4" alum.
MDNR cap. Blazed and scribed:
7" Sugar N57E 39.8' "1/4S NBT"
10" Cedar S65E 26.9' do
10" Cedar S54W 19.4' do
5" Sugar N70W 13.6' do
Set a squared cedar post adjacent.
Bearings are magnetic. Distances are to notch in lower blaze. | (H5) Set 1"IDx32" I.pipe with 4" alum.
MDNR cap. Blazed and scribed:
13" Sugar N02W 24.2' "1/4S NBT"
11" Sugar N87E 15.3' do
12" Sugar S28E 17.7' do
5" Sugar S30W 25.5' do
Set squared cedar post adjacent.
Bearings are magnetic. Distances are to notch in lower blaze. |
|--|---|



Signed by Stephan J. Szyszkoski
 Surveyor's Michigan License No. 33986

Date 7/11/02