

LAND CORNER RECORDATION CERTIFICATE
Filing Requirement of Act 74, Mich. P.A. 1970

For corners in

Baraga

(County)

Located in:

Corner Code #

1. Public Land Survey	T	49N	R	32W	G5
	T	49N	R	32W	E4
	T		R		
	T		R		
2. Property Controlling in Section	S		T	R	
	S		T	R	
3. Miscellaneous Property in Sec.	S		T	R	
	S		T	R	

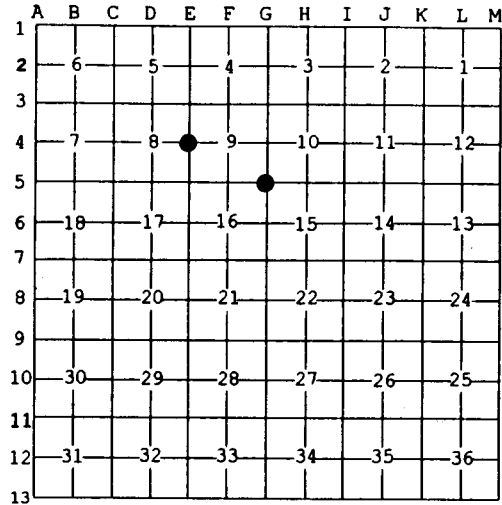
Register of Deeds Stamp & File Number

4. Lot No. _____, Recorded Plat _____
 5. Private Claims _____

E4 Jun 05 2002
 G5 Jun 03 2002

I, Stephan J. Szyszkoski, in a field survey on _____, 20____ do hereby state that under requirements of P.A. 74, Michigan P.A. of 1970, the corner points mentioned in lines 1 and 2 above were in conformance with regulations and rules therefore as required in the current manual of survey instructions of the United States Department of the Interior, Bureau of Land Management or by a decree of a Court of Law and /or that the corner points mentioned in lines 3, 4 and 5 above were in conformance with the rules of the Michigan Board of Land Surveyors or by a Decree of a Court of Law; established, re-established, monumented, recovered, found as expressed below.

NOTE: Not more than 2 corners, all in the same town and range, may be recorded on this certificate.



A. Description of original monument and accessories and/or subsequent restoration:

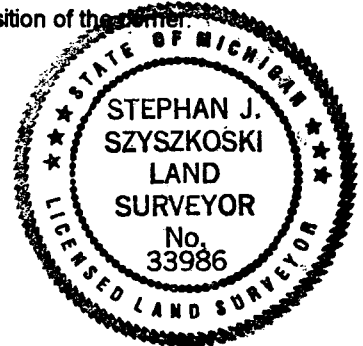
(G5) Corner common to Sections 9-10-15-16. 1981: Reestablished and recorded by K.L.Sackett, RLS: "Set 1"IDx32" iron pipe with 4" alum. cap. 7" Sugar S01W 10.5', 10" Sugar N65E 18.3', 12" Sugar N57W 27.8'."
 (E4) Quarter corner common to Sections 8-9. 1852: Established by Guy H. Carleton: "Set quarter post. Cedar 10 S15W 12 links, Cedar 7 S36E 17 links".

B. Description of corner evidence found and/or method applied in restoring or reestablishing corner:

(G5) The 1981 monument was not recovered. Remonumented the 1981 position at record bearing and distance from the three bearing trees noted above. All are in good condition with overgrown blazes.
 (E4) The original post and accessories were not recovered. The corner falls in a cedar swamp littered with the remains of innumerable cedar stumps and rotting boles. No markings were found on any of those examined, and no two could be made to match the record. The mile between the section corners measures 79.9207 ch. I reestablished the corner midway and on a line of mean true bearing between the section corners north and south.

C. Description of monument for corner and accessories established to perpetuate locating the position of the corner:

(G5) Set 1"IDx32" I.pipe with 4" alum. MDNR cap. Blazed and scribed: 8" Sugar S73W 27.4' "S16 NBT" The 1981 wits: 9" Sugar S03W 10.5' blazes overgrown 12" Sugar N65E 18.3' do 14" Sugar N55W 27.8' do Placed a squared cedar post adjacent. Bearings are magnetic. Distances are to notch in lower blaze.	(E4) Set a 1"IDx32" I.pipe with 4" alum. MDNR cap. Blazed and scribed: 10" Tamarack N55E 12.4' "1/4S NBT" 7" Spruce S13E 9.6' do 9" Cedar S42W 16.2' do 7" Cedar N65W 12.9' do Set a squared cedar post adjacent. Bearings are magnetic. Distances are to notch in lower blaze.
---	---



Signed by Stephan J. Szyszkoski
 Surveyor's Michigan License No. 33986

Date 7/11/02