

# LAND CORNER RECORDATION CERTIFICATE

## FILING REQUIREMENT OF ACT 74, MICH. P.A.1970

FOR CORNERS OF--	LOCATED IN--	CORNER CODE NUMBER
1. PUBLIC LAND SURVEY	T. 49 N. R. 34 W.	G11, F10, F11, G10
2. PROPERTY CONTROLLING IN SECTION	28 T. 49 N. R. 34 W.	16
3. MISCELLANEOUS PROPERTY IN SECTION	T. N. S. R. E. W.	
4. LOT NO. _____, RECORDED PLAT _____		
5. PRIVATE CLAIMS _____		

REGISTER OF DEEDS STAMP AND FILING NUMBER

I, Keith L. Sackett do hereby certify that under requirements of P.A. 74, Michigan P.A. of 1970, the corner points mentioned in lines 1 and 2 above (identified with circles on index code diagram - over) were, in a field survey on see below 19\_\_\_\_, established, re-established, monumented, re-monumented, recovered or restored as expressed below and in conformance with regulations and rules therefore as required in the current manual of survey instructions of the United States Department of the Interior, Bureau of Land Management or by a decree of a court of law. Furthermore, that the corner points mentioned in lines 3, 4 and 5 above were, in a field survey on \_\_\_\_\_ 19\_\_\_\_, found, recovered, restored, established or re-established as expressed below and in conformance with the rules of the Michigan State Board of Registration for Land Surveyors or, by a Decree of a Court of law:

**A. Description of original monument and accessories and/or subsequent restoration:**

- Corner F11: Found stumps of two original bearing trees.
- Corners G10 and G11: Original post and accessories not found.
- Corners F10 and 16: Not set on original survey or subsequently apparently.

**B. Description of corner evidence found and/or method applied in restoring or re-establishing corner:**

- Corner F11: Found stumps believed to be of two original bearing trees. The NE bearing tree has part of an old notch and scribing. Re-established 5-27-75.
- Corner G10: Re-established 6-2-75 on line between section corners.
- Corner G11: Re-established 5-22-75 at location of old rotted post. Old blazers in area. Fits with other corners in area.
- Corner F10: Established 5-22-75 at intersection of north-south, east-west  $\frac{1}{4}$  lines.
- Corner 16: Established 5-22-75 on line between section corner east and  $\frac{1}{4}$  corner west.

**C. Description of monument for corner and accessories established to perpetuate locating the position of the corner:**

- Corner F11: Set 1" I.D. x 36" Iron Pipe with 4" aluminum cap
  - 7" J. Pine N54°E (Mag.) 71.4 ft.  $\frac{1}{8}$ S, NBT
  - 7" J. Pine N45°E (Mag.) 64.5 ft.  $\frac{1}{8}$ S, NBT
- Corner G10: Set 1" I.D. x 36" Iron Pipe with 4" aluminum cap
  - 10" R. Pine S55°E (Mag.) 4.5 ft.  $\frac{1}{8}$ S, NBT
  - 7" J. Pine N32°E (Mag.) 14.7 ft.  $\frac{1}{8}$ S, NBT
- Corner G11: Set 1" I.D. x 36" Iron Pipe with 4" aluminum cap
  - 7" Spruce S78°W (Mag.) 7.4 ft. S33, NBT
- Corner F10: Set 1" I.D. x 36" Iron Pipe with 4" aluminum cap
  - 14" R. Pine N29°W (Mag.) 41.5 ft. S28, NBT
  - 9" R. Pine N31°E (Mag.) 46.8 ft. S27, NBT
  - 6" J. Pine N55°W (Mag.) 10.3 ft.  $\frac{1}{8}$ S, BT
  - 8" J. Pine S23°W (Mag.) 16.6 ft.  $\frac{1}{8}$ S, BT
  - 8" J. Pine N61°E (Mag.) 18.0 ft.  $\frac{1}{8}$ S, 9T
- Corner 16: Set 1" I.D. x 36" Iron Pipe with 4" aluminum cap
  - 14" R. Pine S75°W (Mag.) 30.0 ft. 1/16 S, BT
  - 10" J. Pine S20°E (Mag.) 12.3 ft. 1/16 S, BT

SIGNED BY \_\_\_\_\_ DATE \_\_\_\_\_

SURVEYOR'S MICHIGAN REGISTRATION NO. \_\_\_\_\_

(SEAL)

FOR STATE AND UNITED STATES AGENCIES:

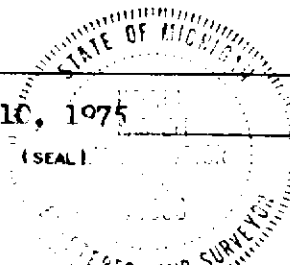
SIGNED BY \_\_\_\_\_ DATE \_\_\_\_\_

APPROVED AND SIGNED BY Keith L. Sackett  
 CHIEF OF SURVEY PARTY  
 Department of Natural Resources

DATE June 10, 1975

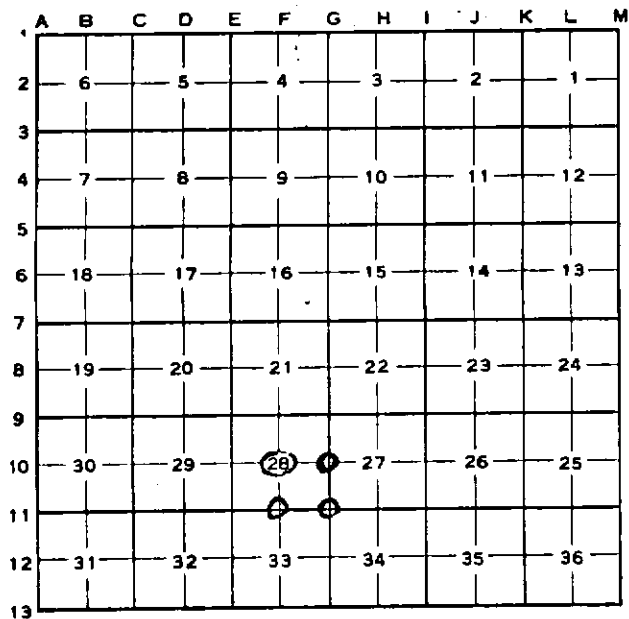
(SEAL)

SURVEYOR'S MICHIGAN REGISTRATION NO. 19006



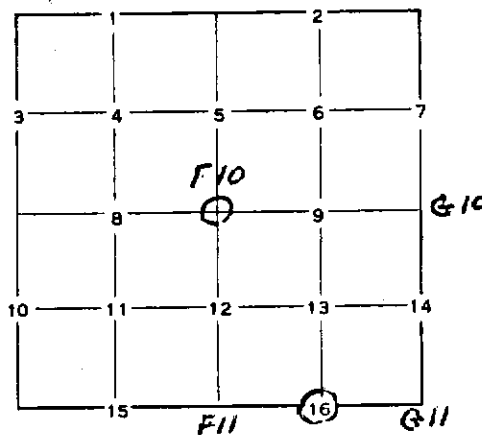
**CORNER NUMBERING CODE DIAGRAMS FOR IDENTIFYING LAND CORNER RECORDATIONS AND INDEXING**

**FOR PUBLIC LAND SURVEY CORNERS IN THE**  
 T. 49N, R. 34W (MENTIONED OVER)



Apply letter prefix for corner points encircled above for identifying corner recordation numbers over.

**FOR PROPERTY CONTROLLING AND MISC. PROPERTY CORNERS WITHIN THE SECTION**  
 (MENTIONED OVER AND EXCLUDE LOT CORNER)



1. Above coded numbers are positioned on 1/16 fractional lines of the section.
2. Township corner code numbers shall be applied to corners of above typical section not numbered.
3. Miscellaneous property corners within a section, located at points other than numbered above, shall be referenced to at least two of above corner code numbers.
4. Private claim corners to be tied to rectangular land corners if possible - sketch required below.

EXPLANATORY SKETCH IF NECESSARY -- BELOW

