

LAND CORNER RECORDATION CERTIFICATE
 Filing Requirement of Act 74, Mich. P.A. 1970

For corners in

<u>Baraga</u> (County)	Located In:	Corner Code #
1. Public Land Survey	T <u>49N</u> R <u>34W</u>	<u>E12</u>
	T <u>49N</u> R <u>34W</u>	<u>C12</u>
	T _____ R _____	_____
	T _____ R _____	_____
2. Property Controlling in Section	S _____ T _____ R _____	_____
	S _____ T _____ R _____	_____
3. Miscellaneous Property in Sec.	S _____ T _____ R _____	_____
	S _____ T _____ R _____	_____

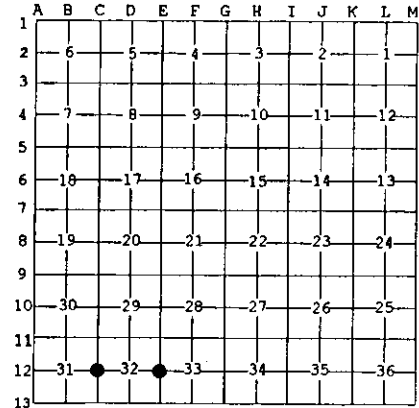
Register of Deeds Stamp & File Number

4. Lot No. _____, Recorded Plat _____
 5. Private Claims _____

C12 Jan 31 2000
 E12 Jan 05 2000

I, Stephan J. Szyszkoski, in a field survey on _____, 19____ do hereby state that under requirements of P.A. 74, Michigan P.A. of 1970, the corner points mentioned in lines 1 and 2 above were in conformance with regulations and rules therefore as required in the current manual of survey instructions of the United States Department of the Interior, Bureau of Land Management or by a decree of a Court of Law and /or that the corner points mentioned in lines 3, 4 and 5 above were in conformance with the rules of the Michigan Board of Land Surveyors or by a Decree of a Court of Law; established, re-established, monumented, recovered, found as expressed below:

NOTE: Not more than 2 corners, all in the same town and range, may be recorded on this certificate.



A. Description of original monument and accessories and/or subsequent restoration:

(E12) Quarter corner common to Sections 32-33. Monumented in 1973 and recorded in 1975 by A.O. Enger, RLS, midway and on line between Section corners 39.732 ch. to north and south. 1" IDx36" iron pipe with 4" aluminum cap. B.Spruce 8" N78.5E, 31.0'; Balsam 6" N78W 40.5'. Recorded again in 1988 by K.L.Sackett, RLS : "Corner placed midway and on line between corners north and south. Set 1" IDx36" I.P. w/ 4" aluminum cap. 5" J. Pine N08E 112.3', 6" J. Pine N14W 119.7"

(C12) Quarter corner common to Sections 31-32. Reestablished in 1959 by Billy D. Buckler RLS, midway and on line between two section corners. 1" pipe with 4" brass cap. 7" J. Pine N24E 48 links, 7" J. Pine S18E 56 links.

B. Description of corner evidence found and/or method applied in restoring or reestablishing corner:

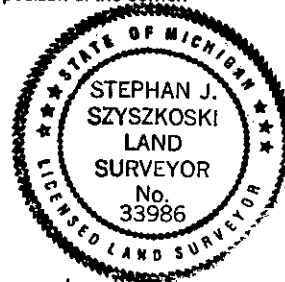
(E12) Recovered a 1" ID iron pipe capped with a broken 4" dia. cast aluminum MI Dept. of Conservation tablet, appropriately stamped, and stamped with RLS "13581" (being A.O. Enger). Witnesses of record were not recovered. The position of the monument is in accord with the 1975 and 1988 record with respect to the section corners to north and south. Left the monument in place and marked new accessories as described below.

(C12) The 1959 monument and accessories were not recovered and are presumed lost. Reestablished the corner midway and on a line of mean true bearing between monumented section corners 2650.91' to the north and south. At the position for the corner I placed a 1" ID x 32" iron pipe capped with a 4" dia. cast aluminum MDNR tablet, appropriately stamped.

C. Description of monument for corner and accessories established to perpetuate locating the position of the corner:

(E12) Found 1" pipe with 4" aluminum cap, broken. Blazed and scribed:
 2" B.Spruce N04E 65.2' "1/4S NBT"
 2" J.Pine S14W 13.4' do
 2" J.Pine S66W 13.7' do
 Set PK nail in power pole S48W 50.39'
 A metal fence post bears N79W, 1.0'.
 Bearings are magnetic. Distances to bearing trees are to notch in lower blaze.

(C12) Set 1" pipe with 4" MDNR cap. Blazed and scribed the following:
 3" J. Pine N35E 13.3' "1/4S NBT"
 6" J. Pine S50E 70.6' do
 6" J. Pine S61W 42.6' do
 4" J. Pine N26W 11.7' do
 Placed squared J.Pine post adjacent.
 Bearings are magnetic. Distances to notch in lower blaze.



Signed by Stephan J. Szyszkoski
 Surveyor's Michigan License No. 33986

Date 4/12/00

For the Michigan Department of Natural Resources - Forest Management Division