

LAND CORNER RECORDATION CERTIFICATE
Filing Requirement of Act 74, Mich. P.A. 1970 as Amended

For corners in

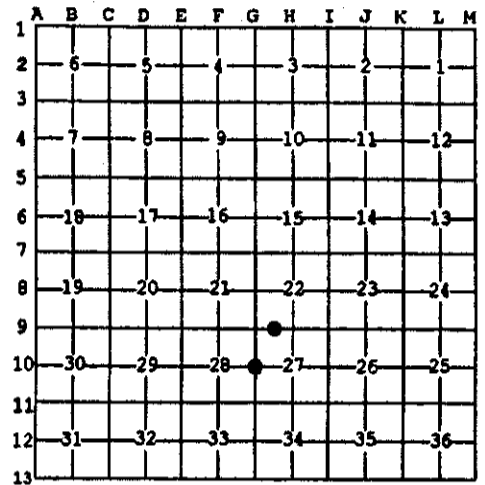
<u>Baraga</u> (County)	Located In:	Corner Code #	
1. Public Land Survey	T <u>49N</u> R <u>34W</u>	G10	
	T _____ R _____		
	T _____ R _____		
2. Property Controlling in Section	S <u>27</u> T <u>49N</u> R <u>34W</u>	I	
	S _____ T _____ R _____		
3. Miscellaneous Property in Sec.	S _____ T _____ R _____		
	S _____ T _____ R _____		

Register of Deeds Stamp & File Number

4. Lot No. _____, Recorded Plat _____
 5. Private Claims
 G10 Jun 16 2004
 1 Jul 17 2004

I, Stephan J. Szyszkoski, in a field survey on _____, 20____ do hereby state that under requirements of P.A. 74, Michigan P.A. of 1970, the corner points mentioned in lines 1 and 2 above were in conformance with regulations and rules therefore as required in the current manual of survey instructions of the United States Department of the Interior, Bureau of Land Management or by a decree of a Court of Law and /or that the corner points mentioned in lines 3, 4 and 5 above were in conformance with the rules of the Michigan Board of Land Surveyors or by a Decree of a Court of Law; established, re-established, monumented, recovered, found as expressed below:

NOTE: Not more than 2 corners, all in the same town and range, may be recorded on this certificate.



A. Description of original monument and accessories and/or subsequent restoration:

(G10) Quarter corner common to Sections 27-28. K.L. Sackett reestablished 6-2-75 midway and on line between section corners. Set 1" IDx36" I.pipe with 4" aluminum cap. 10" R.Pine S55E 4.5', 7" J.Pine N32E 14.7'.
 (1-Sec. 27) West 1/16 corner between Sections 22 and 27. Not established in the original survey.

B. Description of corner evidence found and/or method applied in restoring or reestablishing corner:

(G10) Recovered the 1975 monument in good condition and at record bearing and distance from the 1975 witnesses. The R.Pine is in good condition with scribing visible. The J.Pine is standing dead. Verified the position of the corner with respect to the section corners and made new witnesses as described below.
 (1-Sec. 27) Established the corner midway and on the Section line between G9 1320.96' West and H9 1320.96' East.

C. Description of monument for corner and accessories established to perpetuate locating the position of the corner:

(G10) Found 1 ID I.pipe with 4" alum. MDNR cap. Blazed, scribed, and set measuring nails in: 15" R.Pine S78W 47.7' "1/4S NBT" 3" B.Spruce N47W 17.9' do 4" B.Spruce N85E 11.8' do 10" R.Pine S50E 4.7' 1975 wit. A sq'd spruce post is adjacent. Bearings are magnetic. Distances are to nail with tag.	(I) Set 1 IDx32" I.pipe with 4" alum. MDNR cap. Blazed, scribed, and set measuring nails in: 5" B.Spruce N20E 21.4' "1/16S BT" 6" B.Spruce N80E 9.2' do 6" J.Pine S07W 13.0' do 4" B.Spruce N77W 14.3' do Set sq'd spruce post adjacent. Bearings are magnetic. Distances are to nail with tag.
--	--



Signed by Stephan J. Szyszkoski
 Surveyor's Michigan License No. 33986

Date 10/12/04

For the Michigan Department of Natural Resources, Office of Land and Facilities