

LAND CORNER RECORDATION CERTIFICATE
Filing Requirement of Act 74, Mich. P.A. 1970

For corners in
Baraga

(County)

Located In:

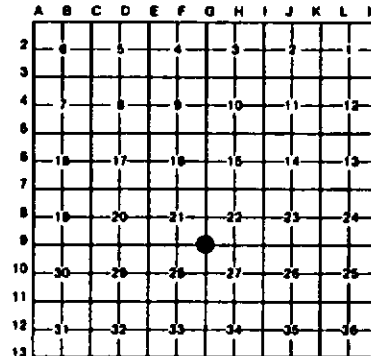
Corner Code #/

- 1. Public Land Survey T 50R 34N 69
T R
T R
T R
- 2. Property Controlling in Section S T R
S T R
- 3. Miscellaneous Property in Sec. S T R
S T R

Register of Deeds Stamp & File Number

- 4. Lot No. _____, Recorded Plat _____
- 5. Private Claims _____

I, Stephan J. Szyszkoski, in a field survey on November 10, 1993, 19____, do hereby certify that under requirements of P.A. 74, Michigan P.A. of 1970, the corner points mentioned in lines 1 and 2 above were in conformance with regulations and rules therefore as required in the current manual of survey instructions of the United States Department of the Interior, Bureau of Land Management or by a decree of a Court of Law and/or that the corner points mentioned in lines 3, 4 and 5 above were in conformance with the rules of the Michigan Board of Land Surveyors or by a Decree of a Court of Law; established, re-established, monumented, re-monumented, recovered, found as expressed below:



NOTE: Not more than 4 corners, all in the same town and range, may be recorded on this certificate.

A. Description of original monument and accessories and/or subsequent restoration:

(69) Corner common to Sections 21-22-27-28. Corner restored in 1961 by Billy D. Buckler, RLS. Replaced from 1 Hemlock B.T. stump, badly rotted and remains of wood stake, 1 foot deep in soil at the corner. Buckler placed 1" pipe with 4" cap at the corner with the following MBTs: 9" Y. Birch S54N 8.5 links, 9" H. Maple N14E 15 links, 6" H. Maple S45E 43.5 links.

B. Description of corner evidence found and/or method applied in restoring or reestablishing corner:

(69) Recovered Buckler's monument as described, at record bearing and distance from the H. Maple MBT NE, now 12" and in good condition, and the Y. Birch, now dead. The MBT H. Maple SE was not recovered. Marked 3 new witnesses as described below.

C. Description of monument for corner and accessories established to perpetuate locating the position of the corner:

(69) Found 1" pipe with 4" Mich Dept. of Conservation cap.
Blazed and scribed the following new bearing trees:
6" Sugar S55E 5.0' "S27 MBT"
10" Sugar S15W 25.1' "S28 MBT"
14" Sugar N53W 16.7' "S21 MBT"
The 1961 MBT:
12" Sugar N21E 9.8'
Bearings magnetic.



Signed by Stephan J. Szyszkoski Date 2-7-94
Surveyor's Michigan License No. 33986