

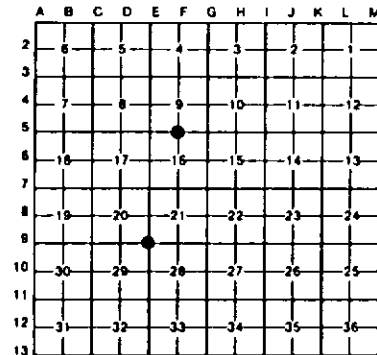
**LAND CORNER RECORDATION CERTIFICATE**  
**Filing Requirement of Act 74, Mich. P.A. 1970**

For corners in Baraga (County) Located In: \_\_\_\_\_ Corner Code #/ # \_\_\_\_\_

1. Public Land Survey	T <u>50N</u> R <u>34W</u>	E9 _____
	T <u>50N</u> R <u>34W</u>	F5 _____
	T _____ R _____	_____
	T _____ R _____	_____
2. Property Controlling in Section	S _____ T _____ R _____	_____
	S _____ T _____ R _____	_____
3. Miscellaneous Property in Sec.	S _____ T _____ R _____	_____

Register of Deeds Stamp & File Number

4. Lot No. \_\_\_\_\_, Recorded Plat \_\_\_\_\_  
 5. Private Claims \_\_\_\_\_



I, Stephan J. Szyszkoski, in a field survey on July 27, 1994, 19\_\_\_\_ do hereby certify that under requirements of P.A. 74, Michigan P.A. of 1970, the corner points mentioned in lines 1 and 2 above were in conformance with regulations and rules therefore as required in the current manual of survey instructions of the United States Department of the Interior, Bureau of Land Management or by a decree of a Court of Law and/or that the corner points mentioned in lines 3, 4 and 5 above were in conformance with the rules of the Michigan Board of Land Surveyors or by a Decree of a Court of Law, established, re-established, monumented, re-monumented, recovered, found as expressed below.

**NOTE: Not more than 4 corners, all in the same town and range, may be recorded on this certificate.**

**A. Description of original monument and accessories and/or subsequent restoration:**

(E9) Section corner common to Sections 20-21-28-29. Corner recorded in 1961 by Billy D. Buckler, RLS: Set 1" iron pipe with 4" brass cap replacing found iron pipe and down blazed pine stub. 1961 NBTs are 7" Soft Maple N49W 45.5 links, 7" Oak S60W 40.5 links, 8" Y. Pine S47E 103 links. Found no subsequent record.  
 (F5) Quarter corner common to Sections 9-16. Corner recorded in 1976 by Arthur O. Enger: Placed monument at record bearing and distance from original 81. 1" I.D.x40" iron pipe with 3.5" aluminum cap. Red Maple 4 N86E 29.3', Red Maple 3 N19W 33.8'. Found no subsequent record.

**B. Description of corner evidence found and/or method applied in restoring or reestablishing corner:**

(E9) Recovered the 1961 monument, in good condition, at record distance from the Oak and Y. Pine NBTs. Noted that the bearings to the Oak and Y. Pine NBTs are not shown properly on the 1961 record. The Oak is S47E and the Y. Pine, now a stump, was found S60W from the corner. Marked 3 new witnesses as described below.  
 (F5) Recovered the 1976 monument, bent and disturbed by road construction, at record bearing and distance from the remaining NBT Red Maple 4" N86E 29.3', in good condition. Remonumented the corner at the position of the 1976 monument with a 1" IDx36" iron pipe capped with a 4" dia. cast aluminum MDNR tablet, appropriately stamped. Marked 3 new witnesses as described below.

**C. Description of monument for corner and accessories established to perpetuate locating the position of the corner:**

(E9) Found 1" pipe with 4" brass cap. Blazed and scribed the following new bearing trees:  
 6" Hemlock N85W 24.3' "S20 NBT"  
 7" Spruce N43E 9.6' "S21 NBT"  
 12" R. Pine S10W 69.3' "S29 NBT"  
 Bearings are magnetic.

(F5) Set 1" iron pipe with 4" MDNR cap. Blazed and scribed the following new bearing trees:  
 4" Maple N73W 51.0' "1/4S NBT"  
 5" Maple N38W 38.4' "1/4S NBT"  
 4" Maple N13E 39.5' "1/4S NBT"  
 Placed a 4" squared cedar post adjacent. Bearings are magnetic.



Signed by Stephan J. Szyszkoski Date 9-21-94  
 Surveyor's Michigan License No 33936