

LAND CORNER RECORDATION CERTIFICATE
Filing Requirement of Act 74, Mich. P.A. 1970

For corners in
Baraga
(County)

Located In: _____ Corner Code ##

1. Public Land Survey	T <u>50N</u> R <u>34W</u>	<u>D7</u>
	T <u>50N</u> R <u>34W</u>	<u>E8</u>
	T _____ R _____	_____
	T _____ R _____	_____
2. Property Controlling in Section	S _____ T _____ R _____	_____
	S _____ T _____ R _____	_____
3. Miscellaneous Property in Sec.	S _____ T _____ R _____	_____
	S _____ T _____ R _____	_____

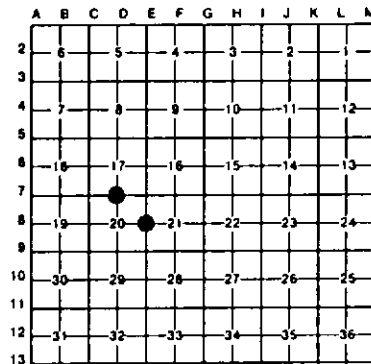
4. Lot No. _____, Recorded Plat _____

5. Private Claims _____

Register of Deeds Stamp & File Number

I, Stephan J. Szyszkoski, in a field survey on August 09, 1995, 19_____, do hereby certify that under requirements of P.A. 74, Michigan P.A. of 1970, the corner points mentioned in lines 1 and 2 above were in conformance with regulations and rules therefore as required in the current manual of survey instructions of the United States Department of the Interior, Bureau of Land Management or by a decree of a Court of Law and/or that the corner points mentioned in lines 3, 4 and 5 above were in conformance with the rules of the Michigan Board of Land Surveyors or by a Decree of a Court of Law, established, re-established, monumented, re-monumented, recovered, found as expressed below:

NOTE: Not more than 4 corners, all in the same town and range, may be recorded on this certificate.



A. Description of original monument and accessories and/or subsequent restoration:

(D7) Quarter corner common to Sections 17-20. Corner remonumented in 1974 by A.O. Enger, RLS from Original BT. Enger placed 1" 1.0.x36" iron pipe with 3.5" aluminum cap and marked: Red Pine 7 N84W 38.6', Red oak 7 S49W 42.7'.

(E8) Quarter corner common to Sections 20-21. Corner reestablished in 1974 by A.O. Enger, RLS from Original Line Trees north and south. Enger placed 1" 1.0.x36" iron pipe with 3.5" aluminum cap and marked: Sugar Maple 5 S38E 10.1', Red Oak 8 N42W 15.4'.

B. Description of corner evidence found and/or method applied in restoring or reestablishing corner:

(D7) Found and accepted Enger's monument, in good condition, and at record bearing and distance from his 1974 accessories, both in good condition with overgrown blazes. Left the monument in place and marked two new witnesses as described below.

(E8) Found and accepted Enger's monument, as described, in good condition, at record bearing and distance from his 1974 witnesses, both in good condition with overgrown blazes. Left the monument in place and marked two new bearing trees as described below.

C. Description of monument for corner and accessories established to perpetuate locating the position of the corner:

(D7) Found 1" pipe with MDNR cap. Blazed and scribed the following new bearing trees: 6" R. Pine N10W 21.2' 1/4S NBT" 4" W. Pine S61E 40.0' 1/4S NBT" Bearings are magnetic.	(E8) Found 1" pipe with MDNR cap. Blazed and scribed the following new bearing trees: 6" Maple N15E 24.0' 1/4S NBT" 5" Maple S35W 7.6' 1/4S NBT" Bearings are magnetic.
--	---



Signed by Stephan J. Szyszkoski Date 9-6-95
Surveyor's Michigan License No. 33986