

MICHIGAN
DEPARTMENT OF CONSERVATION
FORESTRY DIVISION

LAND CORNER RECORD

T. 51 N.R. 30 W

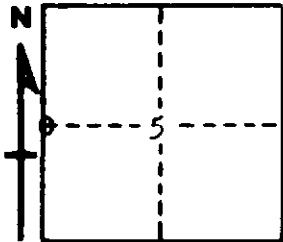
Baraga COUNTY

DESCRIPTION OF CORNER 1/4 Corner for Secs. 6/5

CORNER MONUMENT 1" Iron Pipe with 4" Aluminum Cap

DATE MONUMENT PLACED AND WITNESSED 7/15/65 with J. Magnuson

WITNESSES TO CORNER..... 9" Tamarack (1/4S NBT), S 33° E, 57 1/2 Lks.



30" W. Pine stub (Orig. BT)) S 78° W, 21 Lks.

AND

CIRCLE CORNER REGISTERED

DESCRIPTION IN DETAIL AS TO HOW CORNER WAS LOCATED AND IDENTIFIED OR RESTORED.

This Corner was replaced from 30" W. Pine S 78° W, 21 Lks. and original BT, now a stub 7" high with both faces and portion of iron marks on lower face.

SURVEYOR'S SEAL

SIGNED Frank J. Bray DATE 9/10/1965
REGISTERED LAND SURVEYOR