

MICHIGAN
DEPARTMENT OF CONSERVATION
FORESTRY DIVISION

LAND CORNER RECORD

T. 51 N.R. 30 W

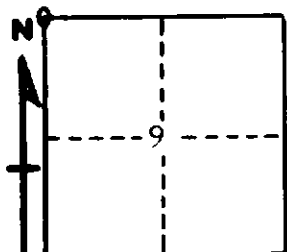
Benaga COUNTY

DESCRIPTION OF CORNER Section Corner for Secs. 4-5-8-9

CORNER MONUMENT 1" Iron Pipe with 4" Aluminum Cap

DATE MONUMENT PLACED AND WITNESSED 7/20/65 with J. Magnuson

WITNESSES TO CORNER..... 8" Aspen (S8 NBT), S 45° W, 26½ lks.



7" Aspen (S9 NBT), S 72° E, 31 lks.

6" Aspen (S4 NBT), N 44° E, 22½ lks.

AND

CIRCLE CORNER REGISTERED

DESCRIPTION IN DETAIL AS TO HOW CORNER WAS LOCATED AND IDENTIFIED OR RESTORED.

This Corner was replaced from (2) two Original PT's, Hemlocks down, rotted by faces and portions of scribe marks visible. 3/4" Iron Pipe at Corner.

SURVEYOR'S SEAL

SIGNED Frank J. Bray DATE 9/10/1965
REGISTERED LAND SURVEYOR