

SURVEY & REMONUMENTATION

MAY 05 1997

LAND CORNER RECORDATION CERTIFICATE
Filing Requirement of Act 74, Mich. P.A. 1970

For corners in COMMISSION

<u>Baraga</u> (County)	Located in:	Corner Code #
1. Public Land Survey	<u>T 51N R 33W</u>	<u>C-2</u>
	T ___ R ___	_____
	T ___ R ___	_____
	T ___ R ___	_____
2. Property Controlling in Section	S ___ T ___ R ___	_____
	S ___ T ___ R ___	_____
3. Miscellaneous Property in Sec.	S ___ T ___ R ___	_____
	S ___ T ___ R ___	_____

RECEIVED FOR RECORD THIS 23RD DAY OF OCTOBER, 1996 AT 10:30 A.M. AND RECORDED IN LIBER 4 OF LAND CORNER RECORDATION RECORDS ON PAGES 674-675.

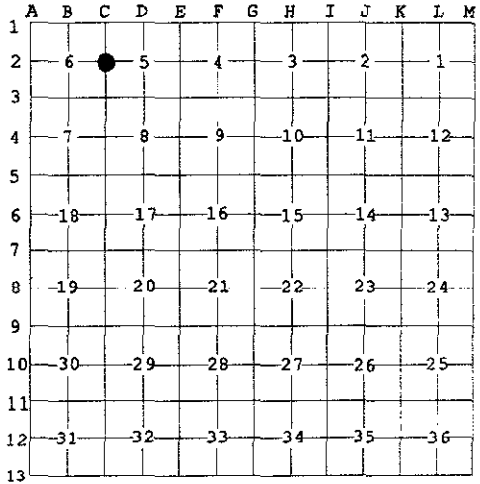
Helda Mc Intyre
 BARAGA COUNTY REGISTER OF DEEDS

Register of Deeds Stamp & File Number

4. Lot No. _____, Recorded Plat _____
 5. Private Claims _____

I, Michael Mileski, in a field survey on October, 19 96 do hereby state that under requirements of P.A. 74, Michigan P.A. of 1970, the corner points mentioned in lines 1 and 2 above were in conformance with regulations and rules therefore as required in the current manual of survey instructions of the United States Department of the Interior, Bureau of Land Management or by a decree of a Court of Law and /or that the corner points mentioned in lines 3, 4 and 5 above were in conformance with the rules of the Michigan Board of Land Surveyors or by a Decree of a Court of Law; established, re-established, monumented, recovered, found as expressed below:

NOTE: Not more than 2 corners, all in the same town and range, may be recorded on this certificate.



A. Description of original monument and accessories and/or subsequent restoration:

C-2; One-quarter Corner common to Sections 5 and 6, T51N, R33W;

See back of form.

B. Description of corner evidence found and/or method applied in restoring or reestablishing corner:

C-2; One-quarter Corner common to Sections 5 and 6, T51N, R33W;

Found the BLM monument to be in agreement with both of the BLM new bearing trees. A thorough search for the remains of the U.S. bearing trees proved inconclusive. The similarity of this monument to those at the other corners listed in Part A and their harmonious relationship strongly implies their establishment by proper surveying techniques. This corner is therefore accepted as the best available evidence of the position of the original corner. I did not remonument the corner but added "PA 345 1996" to the cap.

C. Description of monument for corner and accessories established to perpetuate locating the position of the corner:

C-2; One-quarter Corner common to Sections 5 and 6, T51N, R33W;

Found a 2 1/2" x 30" aluminum pipe with a 3 1/2" aluminum cap appropriately stamped as to location.

i) Set 7" spike	SW/side	15" Sugar Maple	S57°E	14.85'
ii) Set 7" spike	NW/side	15" Red Maple	S45°E	38.93'
iii) Set 7" spike	S/side	8" Sugar Maple	S85°W	31.35'
iv) Set 7" spike	SW/side	13" Yellow Birch	N57°W	48.52'
		Location Post	North	1.0'



(i) and (iii) are BLM new bearing trees and are further described in Part A.
 (ii) and (iv) are marked with upper and lower blazes. The lower blaze is scribed "NBT". Both blazes as well as a band around the tree at the upper blaze are painted red.

Signed by *Michael Mileski*
 Surveyor's Michigan License No. 39091

Date 22 Oct 1996

A. Description of original monument and accessories and/or subsequent restoration:

C-2; One-quarter Corner common to Sections 5 and 6, T51N, R33W;

Originally established during U.S. Survey conducted by Harvey Mellen, D.S. in 1845 and monumented with a sugar maple post witnessed by a

Sugar 16 S56°E 18 lks.

and a

Sugar 8 S43°E 05 lks.

During the course of a survey conducted by Stephen Douglas of the Bureau of Land Management from 10 May 1984 to 10 November 1984 and approved 23 September 1985, this corner was found to be monumented with a 2 inch diameter iron pipe "from which the remains of the orig. bearing trees: A stump hole, bears S. 56°E., 18 lks. dist. (and) A stump hole, bears S43°W., 5 lks. dist.". The BLM remonumented the corner with a 2½" x 30" aluminum pipe and cap and noted the following new bearing trees:

Maple 10 S50°E 22½ lks. (14.85')

Found a sugar maple presently alive and 15" in diameter having a partially open lower blaze with scribing visible.

Set 7" spike SW/side Measured S57°E 14.85'

and a

Maple 5 S88°W 47½ lks. (31.35')

Found a sugar maple presently alive and 8" in diameter having a partially open lower blaze with scribing visible.

Set 7" spike S/side Measured S85°W 31.35'

To each of the above BLM new bearing trees I added an upper blaze and painted both blazes red as well as painted a red band around the tree at the upper blaze.

Also during this survey the BLM recovered and accepted similar monuments at the N1/16 corner common to sections 5 and 6, the closing corner common to sections 5 and 6, and the standard corner common to sections 31 and 32. At the latter two corners the BLM field notes state that the remains of the original bearing trees were recovered.

SURVEY &
REMONUMENTATION

MAY 05 1997

COMMISSIONER