

SURVEY RECONSTRUCTION

MAY 05 1997

LAND CORNER RECORDATION CERTIFICATE  
Filing Requirement of Act 74, Mich. P.A. 1970

For corners in

COMMISSION

<u>Baraga</u> (County)	Located In:	Corner Code #
1. Public Land Survey	T <u>51N</u> R <u>R33W</u>	<u>E-2</u>
	T _____ R _____	_____
	T _____ R _____	_____
	T _____ R _____	_____
2. Property Controlling in Section	S _____ T _____ R _____	_____
	S _____ T _____ R _____	_____
3. Miscellaneous Property in Sec.	S _____ T _____ R _____	_____
	S _____ T _____ R _____	_____

RECEIVED FOR RECORD THIS 23RD DAY OF OCTOBER, 1996 AT 10:30 A.M. AND RECORDED IN LIBER 4 OF LAND CORNER RECORDATION RECORDS ON PAGES 672-673.

*Helda McArthur*  
BARAGA COUNTY REGISTER OF DEEDS

Register of Deeds Stamp & File Number

4. Lot No. \_\_\_\_\_, Recorded Plat \_\_\_\_\_  
5. Private Claims \_\_\_\_\_

I, Michael Mileski, in a field survey on October, 19 96 do hereby state that under requirements of P.A. 74, Michigan P.A. of 1970, the corner points mentioned in lines 1 and 2 above were in conformance with regulations and rules therefore as required in the current manual of survey instructions of the United States Department of the Interior, Bureau of Land Management or by a decree of a Court of Law and /or that the corner points mentioned in lines 3, 4 and 5 above were in conformance with the rules of the Michigan Board of Land Surveyors or by a Decree of a Court of Law; established, re-established, monumented, recovered, found as expressed below:

NOTE: Not more than 2 corners, all in the same town and range, may be recorded on this certificate.

A. Description of original monument and accessories and/or subsequent restoration:

E-2; One-quarter Corner common to Sections 4 and 5, T51N, R33W;

See back of form.

B. Description of corner evidence found and/or method applied in restoring or reestablishing corner:

E-2; One-quarter Corner common to Sections 4 and 5, T51N, R33W;

Set a 1"(I.D.) x 36" galvanized iron pipe with a 2" aluminum cap on line and at proportionate distance between the southeast corner of section 5 and the closing corner common to sections 4 and 5 from a control traverse along this section line. Very close to this position a curved steel band approximately 8 inches in length and resembling a small leafspring was found vertically and 4 inches below the road surface. No BLM copperweld was found. Corner location falls approximately 2 feet east of the physical centerline of Bear Town Road which at this point is a north-south unimproved gravel road 10 feet in width. Accepted as a careful and faithful reestablishment of the position of the original corner.

C. Description of monument for corner and accessories established to perpetuate locating the position of the corner:

E-2; One-quarter Corner common to Sections 4 and 5, T51N, R33W;

Set a 1"(I.D.) x 36" galvanized iron pipe with a 2" aluminum cap appropriately stamped as to location 12" below the road surface.

- i) Set 7" spike NW/side 13" Red Maple N55°E 56.43'
- ii) Set 7" spike W/side 9" White Spruce S31°E 47.16'
- iii) Set 7" spike NW/side 15" Hemlock S55°W 40.26'
- iv) Set 7" spike N/side 10" Cedar N64°W 72.67'
- Location Post S85°W 20.0'

(i) and (iii) are BLM new bearing trees and are described in Part A.

(ii) and (iv) are marked with an upper and lower blaze. The lower blaze is scribed "NBT". Both blazes as well as a band around the tree at the upper blaze are painted red.

Signed by *Michael Mileski*

Date 22 Oct 1996

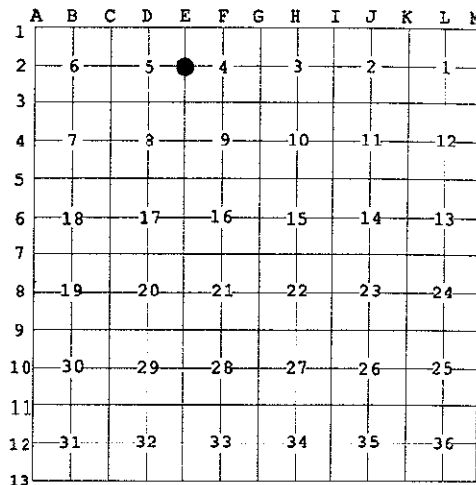
Surveyor's Michigan License No. 39091



APPROVED LAND CORNER  
P.A. 345 OF 1990  
Baraga County

10-09-96

*Helda McArthur*



A. Description of original monument and accessories and/or subsequent restoration:

E-2; One-quarter Corner common to Sections 4 and 5, T51N, R33W;

Originally established during U.S. Survey conducted by Harvey Mellen, D.S. in 1845 and monumented with a maple post witnessed by a

Maple            8            S77°E            11 lks.

and a

Hemlock        16            N26°W            13 lks.

During the course of a survey conducted by Stephen Douglas of the Bureau of Land Management from 10 May 1984 to 10 November 1984 and approved 23 September 1985, this corner was remonumented with a 9/16" x 30" copperweld and cap on line and at proportionate distance between the southeast corner of section 5 and the closing corner common to sections 4 and 5 both of which are probable U.S. corners. In the field notes of this survey it is stated that

"From this point, the ¼ sec. Cor. of secs. 4 and 5, erroneously reestablished at a midpoint position by Marshall J. Hall, Junior Engineer, U.S. Indian Service, in 1935, bears N. 1°12.6' W., 0.289 chs. dist., determined at record bearing and dist.; from the remains of the 1935 bearing accessory:

The base of a cedar post, 6 ins. diam., firmly set, for a reference monument, bears West, 0.303 chs. dist.; the fallen and decayed post alongside has face mkd. ¼ 5+4. T51N, R33W, 20 E, CCCID."

The BLM noted the following new bearing trees:

Maple            7            N59°E            85½ lks. (56.43')

Found a red maple presently alive and 13" in diameter having a mostly open lower blaze with scribing visible.

Set 7" spike            NW/side            Measured            N55°E            56.43'

and a

Hemlock        9            S60°W            61 lks. (40.26')

Presently alive and 15" in diameter having a healed lower blaze.

Set 7" spike            NW/side            Measured            S55°W            40.26'

To both of the above BLM new bearing trees I added an upper blaze and painted both blazes red as well as painted a red band around the tree at the upper blaze.

SURVEY &  
REMONUMENTATION

MAY 05 1997

COMMISSION