

**SURVEY &
REMONUMENTATION**

MAY 05 1997

**LAND CORNER RECORDATION CERTIFICATE
Filing Requirement of Act 74, Mich. P.A. 1970**

For corners in

COMMISSION

<u>Baraga</u> (County)	Located In:	Corner Code #
1. Public Land Survey	T <u>51N</u> R <u>33W</u>	<u>E-4</u>
	T _____ R _____	_____
	T _____ R _____	_____
	T _____ R _____	_____
2. Property Controlling in Section	S _____ T _____ R _____	_____
	S _____ T _____ R _____	_____
3. Miscellaneous Property in Sec.	S _____ T _____ R _____	_____
	S _____ T _____ R _____	_____

RECEIVED FOR RECORD THIS 20TH DAY OF DECEMBER, 1996 AT 10:30 A.M. AND RECORDED IN LIBER 4 OF LAND CORNER RECORDATION RECORDS ON PAGES 720-721.

Helda Mc Intyre
BARAGA COUNTY REGISTER OF DEEDS

Register of Deeds Stamp & File Number

4. Lot No. _____, Recorded Plat _____
5. Private Claims _____

I, Michael Mileski, in a field survey on November, 19 96 do hereby state that under requirements of P.A. 74, Michigan P.A. of 1970, the corner points mentioned in lines 1 and 2 above were in conformance with regulations and rules therefore as required in the current manual of survey instructions of the United States Department of the Interior, Bureau of Land Management or by a decree of a Court of Law and for that the corner points mentioned in lines 3, 4 and 5 above were in conformance with the rules of the Michigan Board of Land Surveyors or by a Decree of a Court of Law; established, re-established, monumented, recovered, found as expressed below:

NOTE: Not more than 2 corners, all in the same town and range, may be recorded on this certificate.

A. Description of original monument and accessories and/or subsequent restoration:

E-4; One-quarter Corner common to Sections 8 and 9, T51N, R33W;

See back of form.

B. Description of corner evidence found and/or method applied in restoring or reestablishing corner:

E-4; One-quarter Corner common to Sections 8 and 9, T51N, R33W;

Found a 2 1/2" diameter aluminum pipe with a 3" aluminum cap projecting 6 inches above the ground as set by the BLM in 1984. The position of this monument was verified by a traverse. I did not remonument the corner, but stamped "PA 345 1996" to the cap. Accepted as a careful and faithful reestablishment of the position of the original corner.

C. Description of monument for corner and accessories established to perpetuate locating the position of the corner:

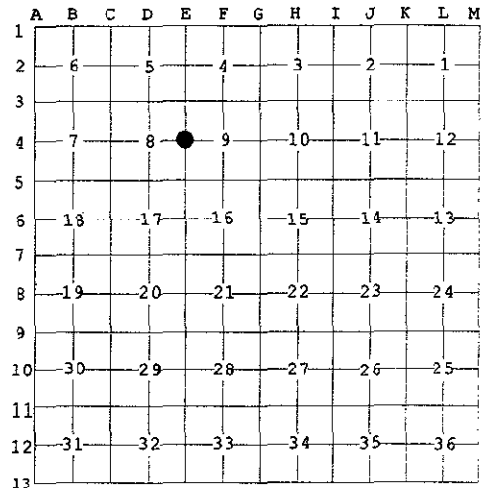
E-4; One-quarter Corner common to Sections 8 and 9, T51N, R33W;

Found a 2 1/2" aluminum pipe with a 3" aluminum cap stamped as to location projecting 6 inches above the ground.

i)	Set 7" spike	W/side	6" Sugar Maple	N05°E	21.23'
ii)	Set 7" spike	S/side	13" Sugar Maple	S84°E	37.67'
iii)	Set 7" spike	NE/side	6" Sugar Maple	S26°E	27.20'
iv)	Set 7" spike	SE/side	15" Yellow Birch	S79°W	22.44'
v)	Set 7" spike	S/side	10" Sugar Maple	N73°W	42.12'
vi)			Location Post	North	1.0'

(i), (iii), and (v) are marked with with upper and lower blazes. The lower blaze is scribed "NBT". Both blazes as well as a band around the tree at the upper blaze are painted red.

(ii) and (iv) are BLM new bearing trees and are further described in Part A.



APPROVED LAND CORNER
P.A. 345 OF 1990
Baraga County

MT
12-18-96



Signed by *Michael Mileski*
Surveyor's Michigan License No. 39091

Date 18 Dec 1996

A. Description of original monument and accessories and/or subsequent restoration:

E-4; One-quarter Corner common to Sections 8 and 9, T51N, R33W,

Originally established during U.S. Survey conducted by Harvey Mellen, D.S. in 1845 and monumented with a cedar post witnessed by a

Lynn	8	S44°W	22 lks.
and a			
Yellow Birch	10	N49°W	11 lks.

During the course of a survey conducted by Stephen Douglas of the Bureau of Land Management from 10 May 1984 to 10 November 1984 and approved 23 September 1985, this corner was considered lost and reestablished midway and on line between government corners immediately to the north and south. The BLM monumented this position with a 2½" x 30" aluminum pipe and cap witnessed by a

Maple	12	S82°E	57½ lks. (37.95')
-------	----	-------	-------------------

Found an alive sugar maple 13" in diameter having a partially healed lower blaze with scribing visible. Set a 7" spike on the S/side.
Measured S84°E 37.67'

Yellow Birch	15	S83°W	34 lks. (22.44')
--------------	----	-------	------------------

Presently alive and 15" in diameter having no blazes yet scribing is visible in the bark. Set a 7" spike on the SE/side.
Measured S79°W 22.44'

To each of the above BLM new bearing trees, I added an upper blaze. All blazes as well as a band around the tree at the upper blaze were painted red.

SURVEY &
REMONUMENTATION

MAY 05 1987

COMMISSION