

**SURVEY &
REMONUMENTATION**

MAY 05 1997 **LAND CORNER RECORDATION CERTIFICATE**
Filing Requirement of Act 74, Mich. P.A. 1970

For corners in

COMMISSION

<u>Baraga</u> (County)	Located In:	Corner Code #
1. Public Land Survey	T <u>51N</u> R <u>33W</u>	E-11
	T _____ R _____	_____
	T _____ R _____	_____
	T _____ R _____	_____
2. Property Controlling in Section	S _____ T _____ R _____	_____
	S _____ T _____ R _____	_____
3. Miscellaneous Property in Sec.	S _____ T _____ R _____	_____
	S _____ T _____ R _____	_____

RECEIVED FOR RECORD THIS 20TH
DAY OF DECEMBER, 1996 AT 10:30
A.M. AND RECORDED IN LIBER 4
OF LAND CORNER RECORDATION
RECORDS ON PAGES 724-725.

Richard M. Antypa
BARAGA COUNTY REGISTER OF DEEDS

Register of Deeds Stamp & File Number

4. Lot No. _____, Recorded Plat _____
5. Private Claims _____

I, Michael Mileski, in a field survey on November, 19 96 do hereby state that under requirements of P.A. 74, Michigan P.A. of 1970, the corner points mentioned in lines 1 and 2 above were in conformance with regulations and rules therefore as required in the current manual of survey instructions of the United States Department of the Interior, Bureau of Land Management or by a decree of a Court of Law and /or that the corner points mentioned in lines 3, 4 and 5 above were in conformance with the rules of the Michigan Board of Land Surveyors or by a Decree of a Court of Law; established, re-established, monumented, recovered, found as expressed below:

NOTE: Not more than 2 corners, all in the same town and range, may be recorded on this certificate.

A. Description of original monument and accessories and/or subsequent restoration:

E-11; Section Corner common to Sections 28, 29, 32, and 33, T51N, R33W;

See back of form.

B. Description of corner evidence found and/or method applied in restoring or reestablishing corner:

E-11; Section Corner common to Sections 28, 29, 32, and 33, T51N, R33W;

Found a copper rod with cap in a monument box as established by Brian Taavola, PS in 1981. The corner falls 9.8 feet north of the physical centerline of M-38. This corner was not remonumented. Accepted as a careful and faithful reestablishment of the position of the original corner.

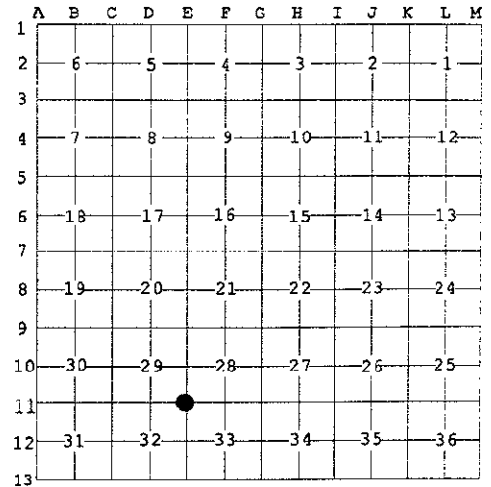
C. Description of monument for corner and accessories established to perpetuate locating the position of the corner:

E-11; Section Corner common to Sections 28, 29, 32, and 33, T51N, R33W;

Found a copper rod with a 1 1/2" brass cap stamped "LLS 21583" 6 inches below the road surface and in a monument box.

Set 7" spike	NW/side	Power Pole	N38°E	74.29'
Set 7" spike	NE/side	Power Pole	S27°E	95.33'
Set 7" spike	W/side	Power Pole	S22°W	79.13'
Set 7" spike	E/side	Power Pole	N26°W	58.80'

All of the above accessories are marked with a vertical red paint stripe.



APPROVED LAND CORNER
P.A. 345 OF 1990
Baraga County

lls
12-18-96

Signed by *Michael Mileski*

Date 18 Dec 1996

Surveyor's Michigan License No. 39091



A. Description of original monument and accessories and/or subsequent restoration:

E-11; Section Corner common to Sections 28, 29, 32, and 33, T51N, R33W;

Originally established during U.S. Survey conducted by Harvey Mellen, D.S. in 1845 and monumented with a sugar maple post witnessed by a

Yellow Birch	20	S53°W	19 lks.
and a			
Fir	10	N35°E	40 lks.

This corner was recovered in 1981 by Brian Taavola, PS #21583 as being monumented with a "PK Nail under recapped blacktop surface as per Michigan Department of Transportation Plans, File #N-23-A-3, dated 1956. Plan wits have been destroyed." Refer to LCRC prepared by Mr. Taavola and recorded in Liber 4 on page 16 of the Baraga County Land Corner Records. Mr. Taavola remonumented the corner with a ½" rod with a 1½" brass cap set inside of a monument box. He noted the following accessories:

Power Pole	N23°W	59.05'
9" Maple	S55°E	85.72'
4" S. Pine	S15°E	86.66'
Power Pole	S05°W	73.73'

Mr. Taavola's corner was accepted by the BLM during the course of their 1984 survey of T51N, R33W.

SURVEY &
REMONUMENTATION

MAY 05 1997

COMMISSION