

MAY 25 1997

**LAND CORNER RECORDATION CERTIFICATE**  
**Filing Requirement of Act 74, Mich. P.A. 1970**

For corners in

<u>Baraga</u> (County)	Located In:	Corner Code #
1. Public Land Survey	T <u>51N</u> R <u>33W</u>	<u>F-5</u>
	T ___ R ___	_____
	T ___ R ___	_____
	T ___ R ___	_____
2. Property Controlling in Section	S ___ T ___ R ___	_____
	S ___ T ___ R ___	_____
3. Miscellaneous Property in Sec.	S ___ T ___ R ___	_____
	S ___ T ___ R ___	_____

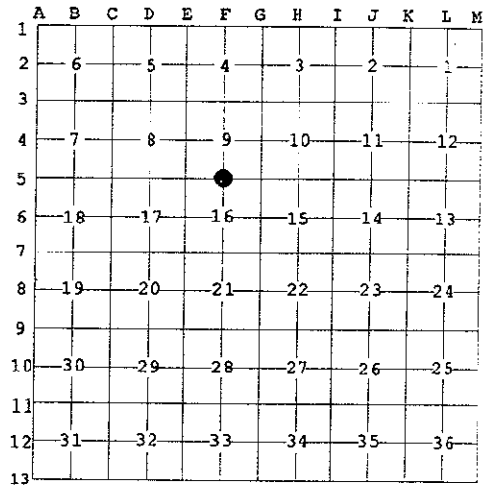
RECEIVED FOR RECORD THIS 20TH DAY OF DECEMBER, 1996 AT 10:30 A.M. AND RECORDED IN LIBER 4 OF LAND CORNER RECORDATION RECORDS ON PAGES 730-731.

*Helda Mc Intyre*  
 BARAGA COUNTY REGISTER OF DEEDS

Register of Deeds Stamp & File Number

4. Lot No. \_\_\_\_\_, Recorded Plat \_\_\_\_\_  
 5. Private Claims \_\_\_\_\_

I, Michael Mileski, in a field survey on November, 19 96, do hereby state that under requirements of P.A. 74, Michigan P.A. of 1970, the corner points mentioned in lines 1 and 2 above were in conformance with regulations and rules therefore as required in the current manual of survey instructions of the United States Department of the Interior, Bureau of Land Management or by a decree of a Court of Law and /or that the corner points mentioned in lines 3, 4 and 5 above were in conformance with the rules of the Michigan Board of Land Surveyors or by a Decree of a Court of Law; established, re-established, monumented, recovered, found as expressed below:



**NOTE: Not more than 2 corners, all in the same town and range, may be recorded on this certificate.**

A. Description of original monument and accessories and/or subsequent restoration:

F-5; One-quarter Corner common to Sections 9 and 16, T51N, R33W;

See back of form.

B. Description of corner evidence found and/or method applied in restoring or reestablishing corner:

F-5; One-quarter Corner common to Sections 9 and 16, T51N, R33W;

Found a 5/8" diameter aluminum rod and 3" aluminum cap projecting 14 inches above the ground as set by the BLM in 1984. The position of this monument was verified by a traverse. I did not remonument the corner, but stamped "PA 345 1996" to the cap. Accepted as a careful and faithful reestablishment of the position of the original corner.

C. Description of monument for corner and accessories established to perpetuate locating the position of the corner:

F-5; One-quarter Corner common to Sections 9 and 16, T51N, R33W;

Found a 5/8" diameter aluminum rod with a 3" aluminum cap stamped as to location projecting 14 inches above the ground.

i)	Set 7" spike	S/side	12" Sugar Maple	N65°E	34.58'
ii)	Set 7" spike	E/side	8" Sugar Maple	S16°E	19.02'
iii)	Set 7" spike	NW/side	11" Sugar Maple	S40°W	38.94'
iv)	Set 7" spike	E/side	8" Sugar Maple	N11°W	37.33'
v)			Location Post	North	1.0'

(i), (ii), and (iv) are marked with upper and lower blazes. The lower blaze is scribed "NBT". Both blazes as well as a band around the tree at the upper blaze are painted red.

(iii) is a BLM new bearing tree and is further described in Part A.



Signed by Michael Mileski

Date 18 Dec 1996

Surveyor's Michigan License No. 39091

A. Description of original monument and accessories and/or subsequent restoration:

F-5; One-quarter Corner common to Sections 9 and 16, T51N, R33W;

Originally established during U.S. Survey conducted by Harvey Mellen, D.S. in 1845 and monumented with a sugar maple post witnessed by a

Hemlock	14	N24°W	6 lks.
and a Hemlock	14	N88°E	12 lks.

During the course of a survey conducted by Stephen Douglas of the Bureau of Land Management from 10 May 1984 to 10 November 1984 and approved 23 September 1985, this corner was considered lost and reestablished midway and on line between government corners immediately to the east and west. The BLM monumented this position with a 5/8" x 48" aluminum rod and cap witnessed by a

Triple W. Birch	15	N61°E	31½ lks. (20.79')
-----------------	----	-------	-------------------

Found all three trunks standing dead. Scribing visible on bark.  
Measured N59°E 19.70'

Maple	9	S42°W	59 lks. (38.94')
-------	---	-------	------------------

Found an alive sugar maple 11" in diameter having a partially healed lower blaze with scribing visible. I added an upper blaze. Both blazes as well as a band around the tree at the upper blaze were painted red. Set a 7" spike on the NW/side.  
Measured S40°W 38.94'

SURVEY &  
REMONUMENTATION

MAY 05 1997

COMMISSION