

**SURVEY &
REMONUMENTATION**

MAY 05 1997

**LAND CORNER RECORDATION CERTIFICATE
Filing Requirement of Act 74, Mich. P.A. 1970**

For corners in

COMMISSION

<u>Baraga</u> (County)	Located In:	Corner Code #
1. Public Land Survey	T <u>51N</u> R <u>33W</u>	<u>F-7</u>
	T _____ R _____	_____
	T _____ R _____	_____
	T _____ R _____	_____
2. Property Controlling in Section	S _____ T _____ R _____	_____
	S _____ T _____ R _____	_____
3. Miscellaneous Property in Sec.	S _____ T _____ R _____	_____
	S _____ T _____ R _____	_____

RECEIVED FOR RECORD THIS 20TH DAY OF DECEMBER, 1996 AT 10:30 A.M. AND RECORDED IN LIBER 4 OF LAND CORNER RECORDATION RECORDS ON PAGES 732-733.

Fielder McArthur
BARAGA COUNTY REGISTER OF DEEDS

Register of Deeds Stamp & File Number

4. Lot No. _____, Recorded Plat _____
5. Private Claims _____

I, Michael Mileski, in a field survey on November, 19 96 do hereby state that under requirements of P.A. 74, Michigan P.A. of 1970, the corner points mentioned in lines 1 and 2 above were in conformance with regulations and rules therefore as required in the current manual of survey instructions of the United States Department of the Interior, Bureau of Land Management or by a decree of a Court of Law and /or that the corner points mentioned in lines 3, 4 and 5 above were in conformance with the rules of the Michigan Board of Land Surveyors or by a Decree of a Court of Law; established, re-established, monumented, recovered, found as expressed below:

NOTE: Not more than 2 corners, all in the same town and range, may be recorded on this certificate.

A. Description of original monument and accessories and/or subsequent restoration:

F-7; One-quarter Corner common to Sections 16 and 21, T51N, R33W;

See back of form.

B. Description of corner evidence found and/or method applied in restoring or reestablishing corner:

F-7; One-quarter Corner common to Sections 16 and 21, T51N, R33W;

Found a 2½" diameter aluminum pipe with a 3" aluminum cap projecting 8 inches above the ground as set by the BLM in 1984. The position of this monument was verified by a traverse. I did not remonument the corner, but stamped "PA 345 1996" to the cap. Accepted as a careful and faithful reestablishment of the position of the original corner.

C. Description of monument for corner and accessories established to perpetuate locating the position of the corner:

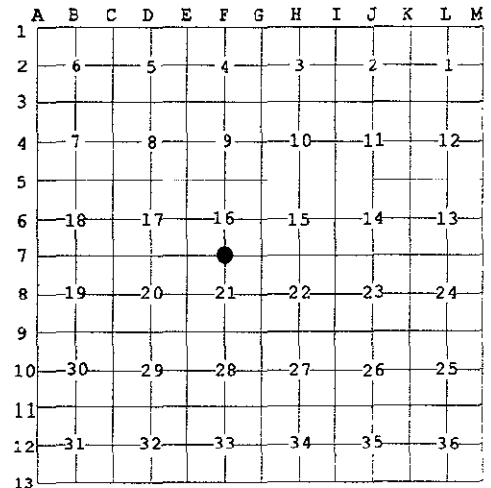
F-7; One-quarter Corner common to Sections 16 and 21, T51N, R33W;

Found a 2½" diameter aluminum pipe with a 3" aluminum cap stamped as to location projecting 8 inches above the ground.

i)	Set 7" spike	W/side	10" Sugar Maple	N05°E	37.29'
ii)	Set 7" spike	SW/side	7" Red Maple	S62°E	7.77'
iii)	Set 7" spike	SE/side	12" Red Maple	S46°W	15.51'
iv)	Set 7" spike	NE/side	6" Sugar Maple	N65°W	23.55'
v)			Location Post	North	1.0'

(i) and (iii) are BLM new bearing trees and are further described in Part A.

(ii) and (iv) are marked with upper and lower blazes. The lower blaze is scribed "NBT". Both blazes as well as a band around the tree at the upper blaze are painted red.



APPROVED LAND CORNER
P.A. 345 OF 1990
Baraga County

ML
12-18-96



Signed by Michael Mileski
Surveyor's Michigan License No. 39091

Date 18 Dec 1996

A. Description of original monument and accessories and/or subsequent restoration:

F-7; One-quarter Corner common to Sections 16 and 21, T51N, R33W;

Originally established during U.S. Survey conducted by Harvey Mellen, D.S. in 1845 and monumented with a sugar maple post witnessed by a

Yellow Birch	14	N71°W	54 lks.
and a Sugar	16	N06°E	26 lks.

During the course of a survey conducted by Stephen Douglas of the Bureau of Land Management from 10 May 1984 to 10 November 1984 and approved 23 September 1985, this corner was considered lost and reestablished midway and on line between government corners immediately to the east and west. The BLM monumented this position with a 2½" x 30" aluminum pipe and cap witnessed by a

Sugar Maple	8	N03°E	56½ lks. (37.29')
Presently alive and 10" in diameter having a partially healed lower blaze with scribing visible. Set a 7" spike on the W/side.			
Measured		N05°E	37.29'

Sugar Maple	10	S48°W	23½ lks. (15.51')
Found an alive red maple 12" in diameter having a partially healed lower blaze with scribing visible. Set a 7" spike on the SE/side.			
Measured		S46°W	15.51'

To each of the above BLM new bearing trees, I added an upper blaze. Both blazes and a band around the tree at the upper blaze were painted red.

SURVEY &
REMONUMENTATION

MAY 05 1997

COMMISSION